

Datasheet for ABIN2788429

anti-TUBb6 antibody (N-Term)



[Go to Product page](#)

1 Image

Overview

Quantity:	100 µL
Target:	TUBb6
Binding Specificity:	N-Term
Reactivity:	Human, Mouse, Rat, Cow, Dog, Horse, Pig, Rabbit, Guinea Pig, Saccharomyces cerevisiae, Zebrafish (Danio rerio)
Host:	Rabbit
Clonality:	Polyclonal
Conjugate:	This TUBb6 antibody is un-conjugated
Application:	Western Blotting (WB)

Product Details

Immunogen:	The immunogen is a synthetic peptide directed towards the N terminal region of human TUBB6
Sequence:	QLERINVYYN ESSSQKYVPR AALVDLEPGT MDSVRSGPFG QLFRPDNFIF
Predicted Reactivity:	Cow: 100%, Dog: 100%, Guinea Pig: 85%, Horse: 100%, Human: 100%, Mouse: 93%, Pig: 100%, Rabbit: 100%, Rat: 93%, Yeast: 85%, Zebrafish: 85%
Characteristics:	This is a rabbit polyclonal antibody against TUBB6. It was validated on Western Blot.
Purification:	Affinity Purified

Target Details

Target:	TUBb6
---------	-------

Target Details

Alternative Name:	TUBB6 (TUBb6 Products)
Background:	<p>Tubulin is the major constituent of microtubules. It binds two moles of GTP, one at an exchangeable site on the beta chain and one at a non-exchangeable site on the alpha-chain.</p> <p>Alias Symbols: HsT1601, MGC132410, MGC4083, TUBB-5</p> <p>Protein Interaction Partner: PCSK9, UBC, SUMO2, DNAJA4, IRS4, NEDD8, ASB10, CAMK1D, TUBB4B, TUBA1A, TUFM, TUBA4A, PCBP1, NUCB2, CLU, PARK2, SAV1, LATS2, PPP6C, EGFR, IGSF8, ICAM1, CD81, FAM86B2, METTL23, CAMKMT, HTRA2, METTL21B, IQCB1, PEX14, NOS2, FN1, SRXN1, TUBA1C, PSAT1, SEC24A,</p> <p>Protein Size: 446</p>
Molecular Weight:	50 kDa
Gene ID:	84617
NCBI Accession:	NM_032525 , NP_115914
UniProt:	Q9BUF5
Pathways:	Microtubule Dynamics

Application Details

Application Notes:	Optimal working dilutions should be determined experimentally by the investigator.
Comment:	Antigen size: 446 AA
Restrictions:	For Research Use only

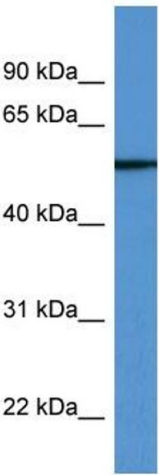
Handling

Format:	Liquid
Concentration:	Lot specific
Buffer:	Liquid. Purified antibody supplied in 1x PBS buffer with 0.09 % (w/v) sodium azide and 2 % sucrose.
Preservative:	Sodium azide
Precaution of Use:	This product contains Sodium azide: a POISONOUS AND HAZARDOUS SUBSTANCE which should be handled by trained staff only.
Handling Advice:	Avoid repeated freeze-thaw cycles.
Storage:	-20 °C

Handling

Storage Comment: For short term use, store at 2-8°C up to 1 week. For long term storage, store at -20°C in small aliquots to prevent freeze-thaw cycles.

Images



Western Blotting

Image 1.