



[Go to Product page](#)

Datasheet for ABIN2788440
anti-CCDC115 antibody (N-Term)

1 Image

Overview

Quantity:	100 µL
Target:	CCDC115
Binding Specificity:	N-Term
Reactivity:	Human, Cow, Dog, Pig
Host:	Rabbit
Clonality:	Polyclonal
Conjugate:	This CCDC115 antibody is un-conjugated
Application:	Western Blotting (WB)

Product Details

Immunogen:	The immunogen is a synthetic peptide directed towards the N-terminal region of Human CCDC115
Sequence:	YAMGAKSVGP LQYASHMEPQ VCLHASEAQE GLQKFKVVRA GVHAPEEVGP
Predicted Reactivity:	Cow: 90%, Dog: 90%, Human: 100%, Pig: 90%
Characteristics:	This is a rabbit polyclonal antibody against CCDC115. It was validated on Western Blot.
Purification:	Affinity Purified

Target Details

Target:	CCDC115
Alternative Name:	CCDC115 (CCDC115 Products)

Target Details

Background: The function of this protein remains unknown.
Alias Symbols: ccp1
Protein Interaction Partner: APP, UBC, TK1, PRKCZ, PLK1, CSNK2B,
Protein Size: 180

Molecular Weight: 20 kDa

Gene ID: 84317

NCBI Accession: [NM_032357](#), [NP_115733](#)

UniProt: [Q96NT0](#)

Application Details

Restrictions: For Research Use only

Handling

Format: Liquid

Concentration: 1 mg/mL

Buffer: Liquid. Purified antibody supplied in 1x PBS buffer with 0.09 % (w/v) sodium azide and 2 % sucrose.

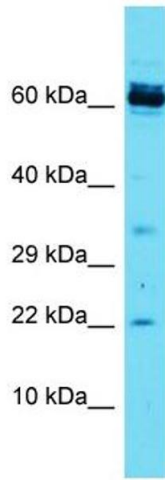
Preservative: Sodium azide

Precaution of Use: This product contains Sodium azide: a POISONOUS AND HAZARDOUS SUBSTANCE which should be handled by trained staff only.

Handling Advice: Avoid repeat freeze-thaw cycles.

Storage: -20 °C

Storage Comment: For short term use, store at 2-8°C up to 1 week. For long term storage, store at -20°C in small aliquots to prevent freeze-thaw cycles.



Western Blotting

Image 1. Host: Rabbit Target Name: CCDC115 Sample Type: Jurkat Whole Cell lysates Antibody Dilution: 1.0ug/ml