

Datasheet for ABIN2788446
anti-ELOF1 antibody (Middle Region)[Go to Product page](#)

1 Image

Overview

Quantity:	100 µL
Target:	ELOF1
Binding Specificity:	Middle Region
Reactivity:	Human, Mouse, Rat, Cow, Dog, Guinea Pig, Horse, Zebrafish (Danio rerio), Goat, Saccharomyces cerevisiae
Host:	Rabbit
Clonality:	Polyclonal
Conjugate:	This ELOF1 antibody is un-conjugated
Application:	Western Blotting (WB)

Product Details

Immunogen:	The immunogen is a synthetic peptide directed towards the middle region of human ELOF1
Sequence:	SCDVKMDRAR NTGVISCTVC LEEFQTPITY LSEPVDVYSD WIDACEAANQ
Predicted Reactivity:	Cow: 100%, Dog: 100%, Goat: 86%, Guinea Pig: 100%, Horse: 100%, Human: 100%, Mouse: 100%, Rat: 100%, Yeast: 100%, Zebrafish: 100%
Characteristics:	This is a rabbit polyclonal antibody against ELOF1. It was validated on Western Blot.
Purification:	Affinity Purified

Target Details

Target:	ELOF1
---------	-------

Target Details

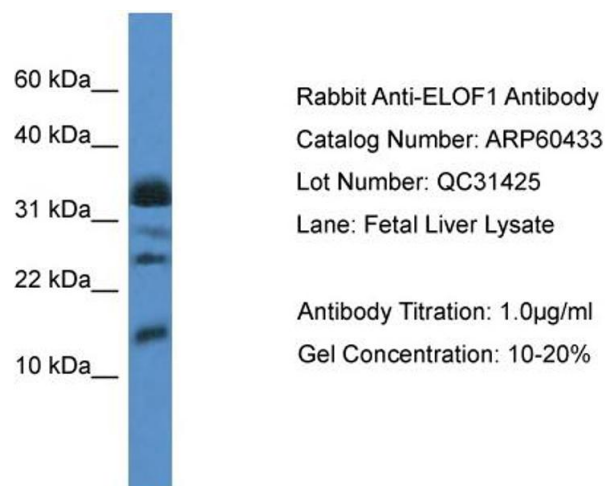
Alternative Name:	ELOF1 (ELOF1 Products)
Background:	<p>ELOF1 is a transcription elongation factor implicated in the maintenance of proper chromatin structure in actively transcribed regions.</p> <p>Alias Symbols: ELF1</p> <p>Protein Interaction Partner: UBC, KDM1A, SUV39H1, CHMP6, MAPK6, C5orf22, JUN, ATP5C1,</p> <p>Protein Size: 83</p>
Molecular Weight:	9 kDa
Gene ID:	84337
NCBI Accession:	NM_032377 , NP_115753
UniProt:	P60002

Application Details

Application Notes:	Optimal working dilutions should be determined experimentally by the investigator.
Comment:	Antigen size: 83 AA
Restrictions:	For Research Use only

Handling

Format:	Liquid
Concentration:	Lot specific
Buffer:	Liquid. Purified antibody supplied in 1x PBS buffer with 0.09 % (w/v) sodium azide and 2 % sucrose.
Preservative:	Sodium azide
Precaution of Use:	This product contains Sodium azide: a POISONOUS AND HAZARDOUS SUBSTANCE which should be handled by trained staff only.
Handling Advice:	Avoid repeated freeze-thaw cycles.
Storage:	-20 °C
Storage Comment:	For short term use, store at 2-8°C up to 1 week. For long term storage, store at -20°C in small aliquots to prevent freeze-thaw cycles.



Western Blotting

Image 1.