



[Go to Product page](#)

Datasheet for ABIN2788464
anti-NUDT22 antibody (C-Term)

1 Image

Overview

Quantity:	100 µL
Target:	NUDT22
Binding Specificity:	C-Term
Reactivity:	Human, Mouse, Rat, Horse, Pig, Rabbit, Cow
Host:	Rabbit
Clonality:	Polyclonal
Conjugate:	This NUDT22 antibody is un-conjugated
Application:	Western Blotting (WB)

Product Details

Immunogen:	The immunogen is a synthetic peptide directed towards the C terminal region of human NUDT22
Sequence:	FYVQCSLTSE QVRKHYLSGG PEAHESTGIF FVETQNVRRLL PETEMWAELC
Predicted Reactivity:	Cow: 86%, Horse: 86%, Human: 100%, Mouse: 79%, Pig: 86%, Rabbit: 86%, Rat: 79%
Characteristics:	This is a rabbit polyclonal antibody against NUDT22. It was validated on Western Blot.
Purification:	Affinity Purified

Target Details

Target:	NUDT22
Alternative Name:	NUDT22 (NUDT22 Products)

Target Details

Background: The function remains unknown.
Alias Symbols: MGC13045
Protein Interaction Partner: AES, UBC,
Protein Size: 303

Molecular Weight: 32 kDa

Gene ID: 84304

NCBI Accession: [NM_032344](#), [NP_115720](#)

UniProt: [Q9BRQ3](#)

Application Details

Application Notes: Optimal working dilutions should be determined experimentally by the investigator.

Comment: Antigen size: 303 AA

Restrictions: For Research Use only

Handling

Format: Liquid

Concentration: Lot specific

Buffer: Liquid. Purified antibody supplied in 1x PBS buffer with 0.09 % (w/v) sodium azide and 2 % sucrose.

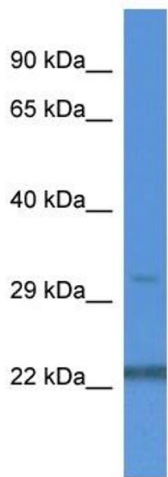
Preservative: Sodium azide

Precaution of Use: This product contains Sodium azide: a POISONOUS AND HAZARDOUS SUBSTANCE which should be handled by trained staff only.

Handling Advice: Avoid repeated freeze-thaw cycles.

Storage: -20 °C

Storage Comment: For short term use, store at 2-8°C up to 1 week. For long term storage, store at -20°C in small aliquots to prevent freeze-thaw cycles.



Rabbit Anti-NUDT22 Antibody
Catalog Number: ARP60482
Lot Number: QC31624
Lane: Fetal Kidney Lysate

Antibody Titration: 1.0µg/ml
Gel Concentration: 12%

Western Blotting

Image 1.