

Datasheet for ABIN2788472  
**anti-SLAP2 antibody (N-Term)**[Go to Product page](#)

## 2 Images

## Overview

Quantity:	100 µL
Target:	SLAP2 (SLA2)
Binding Specificity:	N-Term
Reactivity:	Human, Mouse, Rat, Dog, Horse, Cow, Guinea Pig, Rabbit, Zebrafish (Danio rerio)
Host:	Rabbit
Clonality:	Polyclonal
Conjugate:	This SLAP2 antibody is un-conjugated
Application:	Western Blotting (WB)

## Product Details

Immunogen:	The immunogen is a synthetic peptide directed towards the N terminal region of human SLA2
Sequence:	GDWWTVLSEV SGREYNIPSV HVAKVSHGWL YEGLSREKAE ELLLLPGNPG
Predicted Reactivity:	Cow: 100%, Dog: 100%, Guinea Pig: 100%, Horse: 100%, Human: 100%, Mouse: 100%, Rabbit: 93%, Rat: 100%, Zebrafish: 79%
Characteristics:	This is a rabbit polyclonal antibody against SLA2. It was validated on Western Blot.
Purification:	Affinity Purified

## Target Details

Target:	SLAP2 (SLA2)
Alternative Name:	SLA2 ( <a href="#">SLA2 Products</a> )

## Target Details

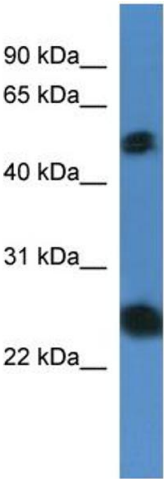
Background:	<p>This gene encodes a member of the SLAP family of adapter proteins. The encoded protein may play an important receptor-proximal role in downregulating T and B cell-mediated responses and inhibits antigen receptor-induced calcium mobilization. This protein interacts with Cas-Br-M (murine) ecotropic retroviral transforming sequence c.</p> <p>Alias Symbols: C20orf156, FLJ21992, MGC49845, SLAP-2, SLAP2, MARS</p> <p>Protein Interaction Partner: ERBB2, ALB, UBC, CBL, CD247, ZAP70, LAMC2, CSF1,</p> <p>Protein Size: 261</p>
Molecular Weight:	28 kDa
Gene ID:	84174
NCBI Accession:	<a href="#">NM_032214</a> , <a href="#">NP_115590</a>
UniProt:	<a href="#">Q9H6Q3</a>

## Application Details

Application Notes:	Optimal working dilutions should be determined experimentally by the investigator.
Comment:	Antigen size: 261 AA
Restrictions:	For Research Use only

## Handling

Format:	Liquid
Concentration:	Lot specific
Buffer:	Liquid. Purified antibody supplied in 1x PBS buffer with 0.09 % (w/v) sodium azide and 2 % sucrose.
Preservative:	Sodium azide
Precaution of Use:	This product contains Sodium azide: a POISONOUS AND HAZARDOUS SUBSTANCE which should be handled by trained staff only.
Handling Advice:	Avoid repeated freeze-thaw cycles.
Storage:	-20 °C
Storage Comment:	For short term use, store at 2-8°C up to 1 week. For long term storage, store at -20°C in small aliquots to prevent freeze-thaw cycles.



Rabbit Anti-SLA2 Antibody  
Catalog Number: ARP60508  
Lot Number: QC31364  
Lane: Jurkat Cell Lysate

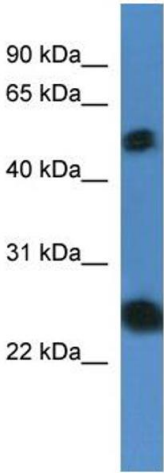
Antibody Titration: 1.0 µg/ml  
Gel Concentration: 12%

Western Blotting

**Image 1.** WB Suggested Anti-SLA2

Antibody Titration: 0.2-1 µg/mL ELISA Titer: 1:1562500

Positive Control: Jurkat cell lysate



Western Blotting

**Image 2. WB Suggested Anti-SLA2 Antibody Titration:** 0.2-1 ug/ml

**ELISA Titer:** 1:1562500

**Positive Control:** Jurkat cell lysate