

Datasheet for ABIN2788473
anti-SLAP2 antibody (Middle Region)[Go to Product page](#)

2 Images

Overview

Quantity:	100 µL
Target:	SLAP2 (SLA2)
Binding Specificity:	Middle Region
Reactivity:	Human, Mouse, Rat, Dog, Horse, Cow, Guinea Pig, Rabbit, Pig, Sheep
Host:	Rabbit
Clonality:	Polyclonal
Conjugate:	This SLAP2 antibody is un-conjugated
Application:	Western Blotting (WB)

Product Details

Immunogen:	The immunogen is a synthetic peptide directed towards the middle region of human SLA2
Sequence:	WLYEGLSREK AEELLLLPGN PGGAFLIRES QTRRGSYLS VRLSRPASWD
Predicted Reactivity:	Cow: 93%, Dog: 86%, Guinea Pig: 86%, Horse: 86%, Human: 100%, Mouse: 93%, Pig: 93%, Rabbit: 93%, Rat: 86%, Sheep: 79%
Characteristics:	This is a rabbit polyclonal antibody against SLA2. It was validated on Western Blot.
Purification:	Affinity Purified

Target Details

Target:	SLAP2 (SLA2)
Alternative Name:	SLA2 (SLA2 Products)

Target Details

Background:	<p>This gene encodes a member of the SLAP family of adapter proteins. The encoded protein may play an important receptor-proximal role in downregulating T and B cell-mediated responses and inhibits antigen receptor-induced calcium mobilization. This protein interacts with Cas-Br-M (murine) ecotropic retroviral transforming sequence c.</p> <p>Alias Symbols: C20orf156, FLJ21992, MGC49845, SLAP-2, SLAP2, MARS</p> <p>Protein Interaction Partner: ERBB2, ALB, UBC, CBL, CD247, ZAP70, LAMC2, CSF1,</p> <p>Protein Size: 261</p>
Molecular Weight:	28 kDa
Gene ID:	84174
NCBI Accession:	NM_032214 , NP_115590
UniProt:	Q9H6Q3

Application Details

Application Notes:	Optimal working dilutions should be determined experimentally by the investigator.
Comment:	Antigen size: 261 AA
Restrictions:	For Research Use only

Handling

Format:	Liquid
Concentration:	Lot specific
Buffer:	Liquid. Purified antibody supplied in 1x PBS buffer with 0.09 % (w/v) sodium azide and 2 % sucrose.
Preservative:	Sodium azide
Precaution of Use:	This product contains Sodium azide: a POISONOUS AND HAZARDOUS SUBSTANCE which should be handled by trained staff only.
Handling Advice:	Avoid repeated freeze-thaw cycles.
Storage:	-20 °C
Storage Comment:	For short term use, store at 2-8°C up to 1 week. For long term storage, store at -20°C in small aliquots to prevent freeze-thaw cycles.

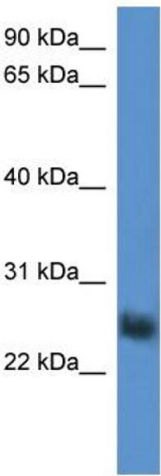


Rabbit Anti-SLA2 Antibody
Catalog Number: ARP60509
Lot Number: QC31365
Lane: HepG2 Cell Lysate

Antibody Titration: 1.0 µg/ml
Gel Concentration: 12%

Western Blotting

Image 1. WB Suggested Anti-SLA2
Antibody Titration: 0.2-1 µg/mL ELISA Titer: 1:12500
Positive Control: HepG2 cell lysate



Western Blotting

Image 2. WB Suggested Anti-SLA2 Antibody Titration: 0.2-1 µg/ml
ELISA Titer: 1:312500
Positive Control: HepG2 cell lysate