

Datasheet for ABIN2788476
anti-TCHP antibody (C-Term)[Go to Product page](#)

2 Images

1 Publication

Overview

Quantity:	100 µL
Target:	TCHP
Binding Specificity:	C-Term
Reactivity:	Human, Mouse, Rat, Cow, Dog, Guinea Pig, Horse, Rabbit, Saccharomyces cerevisiae
Host:	Rabbit
Clonality:	Polyclonal
Conjugate:	This TCHP antibody is un-conjugated
Application:	Western Blotting (WB)

Product Details

Immunogen:	The immunogen is a synthetic peptide directed towards the C terminal region of human TCHP
Sequence:	IQEKIEQNRR AQEESLKHRE QLIRNLEEVR ELARREKEES EKLKSARKQE
Predicted Reactivity:	Cow: 100%, Dog: 86%, Guinea Pig: 100%, Horse: 100%, Human: 100%, Mouse: 100%, Rabbit: 86%, Rat: 100%, Yeast: 91%
Characteristics:	This is a rabbit polyclonal antibody against TCHP. It was validated on Western Blot.
Purification:	Affinity Purified

Target Details

Target:	TCHP
Alternative Name:	TCHP (TCHP Products)

Target Details

Background:	<p>TCHP is a tumor suppressor which has the ability to inhibit cell growth and be pro-apoptotic during cell stress. It inhibits cell growth in bladder and prostate cancer cells by a down-regulation of HSPB1 by inhibiting its phosphorylation. It may act as a 'capping' or 'branching' protein for keratin filaments in the cell periphery. And it also may regulate K8/K18 filament and desmosome organization mainly at the apical or peripheral regions of simple epithelial cells.</p> <p>Alias Symbols: MGC10854, TpMs</p> <p>Protein Interaction Partner: CCDC172, MIPOL1, DYDC1, KRT40, LZTS2, NME7, NDOR1, MKRN3, TRIM27, NAB2, KRT15, CDR2, UBC, LATS2, CUL4A, CCDC85B, TEX11, VIM, KRT18, KRT16, KRT14, KRT8, KRT6A, KRT5,</p> <p>Protein Size: 498</p>
Molecular Weight:	61 kDa
Gene ID:	84260
NCBI Accession:	NM_032300 , NP_115676
UniProt:	Q9BT92

Application Details

Application Notes:	Optimal working dilutions should be determined experimentally by the investigator.
Comment:	Antigen size: 498 AA
Restrictions:	For Research Use only

Handling

Format:	Liquid
Concentration:	Lot specific
Buffer:	Liquid. Purified antibody supplied in 1x PBS buffer with 0.09 % (w/v) sodium azide and 2 % sucrose.
Preservative:	Sodium azide
Precaution of Use:	This product contains Sodium azide: a POISONOUS AND HAZARDOUS SUBSTANCE which should be handled by trained staff only.
Handling Advice:	Avoid repeated freeze-thaw cycles.
Storage:	-20 °C

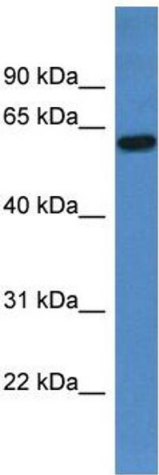
Handling

Storage Comment: For short term use, store at 2-8°C up to 1 week. For long term storage, store at -20°C in small aliquots to prevent freeze-thaw cycles.

Publications

Product cited in: Kenigsberg, Lima, Maghen, Wyse, Lackan, Cheung, Tsang, Librach: "The elusive MAESTRO gene: Its human reproductive tissue-specific expression pattern." in: **PLoS ONE**, Vol. 12, Issue 4, pp. e0174873, (2017) ([PubMed](#)).

Images



Western Blotting

Image 1. WB Suggested Anti-TCHP Antibody Titration:
0.2-1 ug/ml

ELISA Titer: 1:312500

Positive Control: Human Liver



Rabbit Anti-TCHP Antibody
Catalog Number: ARP60515
Lot Number: QC31370
Lane: Fetal Liver Lysate

Antibody Titration: 1.0µg/ml
Gel Concentration: 12%

Western Blotting

Image 2. WB Suggested Anti-TCHP
Antibody Titration: 0.2-1 µg/mL ELISA Titer: 1:12500
Positive Control: Human Liver