

Datasheet for ABIN2788484  
**anti-PYM antibody (Middle Region)**



[Go to Product page](#)

1 Image

## Overview

Quantity:	100 µL
Target:	PYM (WIBG)
Binding Specificity:	Middle Region
Reactivity:	Human, Mouse, Cow, Dog, Horse, Guinea Pig, Rabbit, Rat, Saccharomyces cerevisiae, Zebrafish (Danio rerio)
Host:	Rabbit
Clonality:	Polyclonal
Conjugate:	This PYM antibody is un-conjugated
Application:	Western Blotting (WB)

## Product Details

Immunogen:	The immunogen is a synthetic peptide directed towards the middle region of Mouse Wibg
Sequence:	GLSKTAKRNL KRKEKRRQQQ EKEAEALSRT LDKVSLGDTA QIPSALQG PQ
Predicted Reactivity:	Cow: 100%, Dog: 100%, Guinea Pig: 100%, Horse: 100%, Human: 100%, Mouse: 100%, Rabbit: 93%, Rat: 100%, Yeast: 82%, Zebrafish: 91%
Characteristics:	This is a rabbit polyclonal antibody against Wibg. It was validated on Western Blot.
Purification:	Affinity Purified

## Target Details

Target:	PYM (WIBG)
---------	------------

## Target Details

Alternative Name:	Wibg ( <a href="#">WIBG Products</a> )
Background:	<p>Wibg is a key regulator of the exon junction complex (EJC), a multiprotein complex that associates immediately upstream of the exon-exon junction on mRNAs and serves as a positional landmarks for the intron exon structure of genes and directs post-transcriptional processes in the cytoplasm such as mRNA export, nonsense-mediated mRNA decay (NMD) or translation. It acts as a EJC disassembly factor, allowing translation-dependent EJC removal and recycling by disrupting mature EJC from spliced mRNAs. Its association with the 40S ribosomal subunit probably prevents a translation-independent disassembly of the EJC from spliced mRNAs, by restricting its activity to mRNAs that have been translated. Wibg interferes with NMD and enhances translation of spliced mRNAs, probably by antagonizing EJC functions.</p> <p>Alias Symbols: A030010B05Rik, Pym</p> <p>Protein Size: 202</p>
Molecular Weight:	22 kDa
Gene ID:	78428
NCBI Accession:	<a href="#">NM_001170869</a> , <a href="#">NP_001164340</a>

## Application Details

Application Notes:	Optimal working dilution should be determined by the investigator.
Restrictions:	For Research Use only

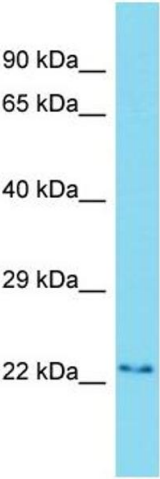
## Handling

Format:	Liquid
Concentration:	1 mg/mL
Buffer:	Liquid. Purified antibody supplied in 1x PBS buffer with 0.09 % (w/v) sodium azide and 2 % sucrose.
Preservative:	Sodium azide
Precaution of Use:	This product contains Sodium azide: a POISONOUS AND HAZARDOUS SUBSTANCE which should be handled by trained staff only.
Handling Advice:	Avoid repeat freeze-thaw cycles.
Storage:	-20 °C

Handling

Storage Comment: For short term use, store at 2-8°C up to 1 week. For long term storage, store at -20°C in small aliquots to prevent freeze-thaw cycles.

Images



Western Blotting

Image 1.