

Datasheet for ABIN2788485
anti-PYM antibody (C-Term)[Go to Product page](#)

2 Images

Overview

Quantity:	100 µL
Target:	PYM (WIBG)
Binding Specificity:	C-Term
Reactivity:	Human, Mouse, Cow, Dog, Horse, Guinea Pig, Rabbit, Rat, Saccharomyces cerevisiae, Pig
Host:	Rabbit
Clonality:	Polyclonal
Conjugate:	This PYM antibody is un-conjugated
Application:	Western Blotting (WB)

Product Details

Immunogen:	The immunogen is a synthetic peptide directed towards the C terminal region of human WIBG
Sequence:	KKIKNLKKKL RQVEELQQRI QAGEVSQPSK EQLEKLARRR ALEEELEDLE
Predicted Reactivity:	Cow: 100%, Dog: 100%, Guinea Pig: 93%, Horse: 100%, Human: 100%, Mouse: 93%, Pig: 100%, Rabbit: 93%, Rat: 100%, Yeast: 100%
Characteristics:	This is a rabbit polyclonal antibody against WIBG. It was validated on Western Blot.
Purification:	Affinity Purified

Target Details

Target:	PYM (WIBG)
Alternative Name:	WIBG (WIBG Products)

Target Details

Background:	<p>WIBG is a key regulator of the exon junction complex (EJC), a multiprotein complex that associates immediately upstream of the exon-exon junction on mRNAs and serves as a positional landmark for the intron exon structure of genes and directs post-transcriptional processes in the cytoplasm such as mRNA export, nonsense-mediated mRNA decay (NMD) or translation. It acts as a EJC disassembly factor, allowing translation-dependent EJC removal and recycling by disrupting mature EJC from spliced mRNAs. Its association with the 40S ribosomal subunit probably prevents a translation-independent disassembly of the EJC from spliced mRNAs, by restricting its activity to mRNAs that have been translated. It interferes with NMD and enhances translation of spliced mRNAs, probably by antagonizing EJC functions.</p> <p>Alias Symbols: MGC13064, PYM</p> <p>Protein Interaction Partner: RTN4IP1, UBC, RPS19, RPS14, RPS13, RPS12, RPS10, RPS9, RPS8, RPS7, RPS6, RPS5, RPS4X, RPS3A, RPS3, RPS2, FAU, BYSL, ZNF503, PNO1, KCMF1, TSR1, RPS27L, UBQLN1, RPS29, RPS28, RPS27, RPS26, RPS25, RPS24, RPS23, RPS20, RPS18, RPS16, RPS15A, TARDBP, MAGOH, TOE</p> <p>Protein Size: 204</p>
-------------	--

Molecular Weight:	23 kDa
-------------------	--------

Gene ID:	84305
----------	-------

NCBI Accession:	NM_032345 , NP_115721
-----------------	---

UniProt:	Q9BRP8
----------	------------------------

Application Details

Application Notes:	Optimal working dilutions should be determined experimentally by the investigator.
--------------------	--

Comment:	Antigen size: 204 AA
----------	----------------------

Restrictions:	For Research Use only
---------------	-----------------------

Handling

Format:	Liquid
---------	--------

Concentration:	Lot specific
----------------	--------------

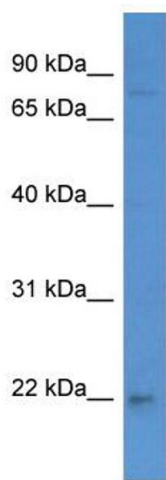
Buffer:	Liquid. Purified antibody supplied in 1x PBS buffer with 0.09 % (w/v) sodium azide and 2 % sucrose.
---------	---

Preservative:	Sodium azide
---------------	--------------

Handling

Precaution of Use:	This product contains Sodium azide: a POISONOUS AND HAZARDOUS SUBSTANCE which should be handled by trained staff only.
Handling Advice:	Avoid repeated freeze-thaw cycles.
Storage:	-20 °C
Storage Comment:	For short term use, store at 2-8°C up to 1 week. For long term storage, store at -20°C in small aliquots to prevent freeze-thaw cycles.

Images

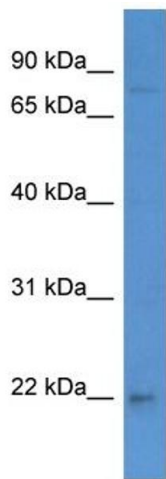


Western Blotting

Image 1. WB Suggested Anti-WIBG Antibody Titration: 0.2-1 ug/ml

ELISA Titer: 1:1562500

Positive Control: 721_B cell lysate



Rabbit Anti-WIBG Antibody
Catalog Number: ARP60533
Lot Number: QC31382
Lane: 721_B Cell Lysate

Antibody Titration: 1.0µg/ml
Gel Concentration: 12%

Western Blotting

Image 2. WB Suggested Anti-WIBG

Antibody Titration: 0.2-1 µg/mL ELISA Titer: 1:1562500

Positive Control: 21_B cell lysate