

Datasheet for ABIN2788488
anti-ZCCHC9 antibody (C-Term)



[Go to Product page](#)

1 Image

Overview

Quantity:	100 µL
Target:	ZCCHC9
Binding Specificity:	C-Term
Reactivity:	Human, Cow, Dog, Pig, Rat, Horse, Mouse, Rabbit
Host:	Rabbit
Clonality:	Polyclonal
Conjugate:	This ZCCHC9 antibody is un-conjugated
Application:	Western Blotting (WB)

Product Details

Immunogen:	The immunogen is a synthetic peptide directed towards the C-terminal region of Human ZCCHC9
Sequence:	KLCGSVEHLK KDCPESQNSE RMVTVGRWAK GMSADYEEIL DVPKPQKPKT
Predicted Reactivity:	Cow: 85%, Dog: 92%, Horse: 91%, Human: 100%, Mouse: 75%, Pig: 77%, Rabbit: 92%, Rat: 83%
Characteristics:	This is a rabbit polyclonal antibody against ZCCHC9. It was validated on Western Blot.
Purification:	Affinity Purified

Target Details

Target:	ZCCHC9
Alternative Name:	ZCCHC9 (ZCCHC9 Products)

Target Details

Background: The function of this protein remains unknown.
Alias Symbols: PPP1R41
Protein Interaction Partner: PPP1CA,
Protein Size: 271

Molecular Weight: 30 kDa

Gene ID: 84240

NCBI Accession: [NM_032280](#), [NP_115656](#)

UniProt: [Q8N567](#)

Application Details

Application Notes: Optimal working dilution should be determined by the investigator.

Restrictions: For Research Use only

Handling

Format: Liquid

Concentration: 1 mg/mL

Buffer: Liquid. Purified antibody supplied in 1x PBS buffer with 0.09 % (w/v) sodium azide and 2 % sucrose.

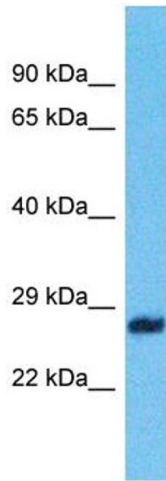
Preservative: Sodium azide

Precaution of Use: This product contains Sodium azide: a POISONOUS AND HAZARDOUS SUBSTANCE which should be handled by trained staff only.

Handling Advice: Avoid repeat freeze-thaw cycles.

Storage: -20 °C

Storage Comment: For short term use, store at 2-8°C up to 1 week. For long term storage, store at -20°C in small aliquots to prevent freeze-thaw cycles.



Western Blotting

Image 1.