

Datasheet for ABIN2788495
anti-IMMP2L antibody (C-Term)[Go to Product page](#)

2 Images

Overview

Quantity:	100 µL
Target:	IMMP2L
Binding Specificity:	C-Term
Reactivity:	Human, Guinea Pig, Cow, Horse
Host:	Rabbit
Clonality:	Polyclonal
Conjugate:	This IMMP2L antibody is un-conjugated
Application:	Western Blotting (WB)

Product Details

Immunogen:	The immunogen is a synthetic peptide directed towards the C terminal region of human IMMP2L
Sequence:	GHSFDSNSFG PVSLGLLHAH ATHILWPPER WQKLESVLPP ERLPVQREEE
Predicted Reactivity:	Cow: 79%, Guinea Pig: 85%, Horse: 86%, Human: 100%
Characteristics:	This is a rabbit polyclonal antibody against IMMP2L. It was validated on Western Blot.
Purification:	Affinity Purified

Target Details

Target:	IMMP2L
Alternative Name:	IMMP2L (IMMP2L Products)

Target Details

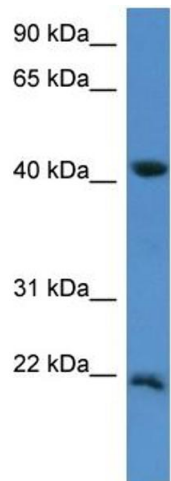
Background:	<p>The mitochondrial inner membrane peptidase (IMP) complex generates mature, active proteins in the mitochondrial intermembrane space by proteolytically removing the mitochondrial targeting presequence of nuclear-encoded proteins. IMP1 (IMMP1L, MIM 612323) and IMP2 are the catalytic subunits of the IMP complex.</p> <p>Alias Symbols: IMP2, IMP2-LIKE</p> <p>Protein Interaction Partner: HNRNPD,</p> <p>Protein Size: 175</p>
Molecular Weight:	20 kDa
Gene ID:	83943
NCBI Accession:	NM_032549 , NP_115938
UniProt:	Q96T52

Application Details

Application Notes:	Optimal working dilutions should be determined experimentally by the investigator.
Comment:	Antigen size: 175 AA
Restrictions:	For Research Use only

Handling

Format:	Liquid
Concentration:	Lot specific
Buffer:	Liquid. Purified antibody supplied in 1x PBS buffer with 0.09 % (w/v) sodium azide and 2 % sucrose.
Preservative:	Sodium azide
Precaution of Use:	This product contains Sodium azide: a POISONOUS AND HAZARDOUS SUBSTANCE which should be handled by trained staff only.
Handling Advice:	Avoid repeated freeze-thaw cycles.
Storage:	-20 °C
Storage Comment:	For short term use, store at 2-8°C up to 1 week. For long term storage, store at -20°C in small aliquots to prevent freeze-thaw cycles.

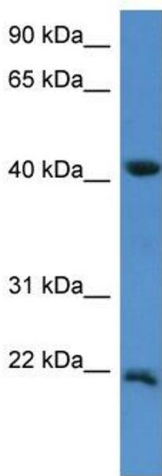


Rabbit Anti-IMMP2L Antibody
Catalog Number: ARP60563
Lot Number: QC31294
Lane: Fetal Lung Lysate

Antibody Titration: 1.0µg/ml
Gel Concentration: 12%

Western Blotting

Image 1. WB Suggested Anti-IMMP2L
Antibody Titration: 0.2-1 µg/mL ELISA Titer: 1::12500
Positive Control: Human Lung



Western Blotting

Image 2. WB Suggested Anti-IMMP2L Antibody Titration:
0.2-1 ug/ml
ELISA Titer: 1:312500
Positive Control: Human Lung