

Datasheet for ABIN2788497
anti-ROPN1L antibody (C-Term)[Go to Product page](#)

2 Images

Overview

Quantity:	100 µL
Target:	ROPN1L
Binding Specificity:	C-Term
Reactivity:	Human
Host:	Rabbit
Clonality:	Polyclonal
Conjugate:	This ROPN1L antibody is un-conjugated
Application:	Western Blotting (WB)

Product Details

Immunogen:	The immunogen is a synthetic peptide directed towards the C terminal region of human ROPN1L
Sequence:	DVSPLETESY LASLKENIDA RKNGMIGLSD FFFPKRKLLE SIENSEDVGH
Predicted Reactivity:	Human: 100%
Characteristics:	This is a rabbit polyclonal antibody against ROPN1L. It was validated on Western Blot.
Purification:	Affinity Purified

Target Details

Target:	ROPN1L
Alternative Name:	ROPN1L (ROPN1L Products)

Target Details

Background:	<p>This gene encodes a member of the ropporin family. The encoded protein is a sperm protein. It interacts with A-kinase anchoring protein, AKAP3, through the amphipathic helix region of AKAP3. Type II regulatory subunit of cAMP-dependent protein kinase (PKARII) also binds to this helix domain of AKAP3, which allows PKARII to be targeted to specific subcellular compartments. It is suggested that sperm contains several proteins that bind to AKAPs in a manner similar to PKARII, and this encoded protein may be one of them.</p> <p>Alias Symbols: ASP, FLJ23003, FLJ25776, RSPH11</p> <p>Protein Interaction Partner: RSPH3, APP, AKAP3,</p> <p>Protein Size: 230</p>
-------------	---

Molecular Weight:	26 kDa
-------------------	--------

Gene ID:	83853
----------	-------

NCBI Accession:	NM_031916 , NP_114122
-----------------	---

UniProt:	Q96C74
----------	------------------------

Application Details

Application Notes:	Optimal working dilutions should be determined experimentally by the investigator.
--------------------	--

Comment:	Antigen size: 230 AA
----------	----------------------

Restrictions:	For Research Use only
---------------	-----------------------

Handling

Format:	Liquid
---------	--------

Concentration:	Lot specific
----------------	--------------

Buffer:	Liquid. Purified antibody supplied in 1x PBS buffer with 0.09 % (w/v) sodium azide and 2 % sucrose.
---------	---

Preservative:	Sodium azide
---------------	--------------

Precaution of Use:	This product contains Sodium azide: a POISONOUS AND HAZARDOUS SUBSTANCE which should be handled by trained staff only.
--------------------	--

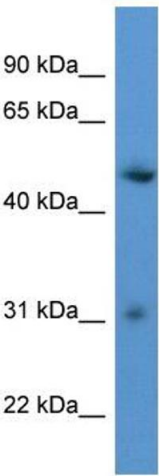
Handling Advice:	Avoid repeated freeze-thaw cycles.
------------------	------------------------------------

Storage:	-20 °C
----------	--------

Storage Comment:	For short term use, store at 2-8°C up to 1 week. For long term storage, store at -20°C in small
------------------	---

aliquots to prevent freeze-thaw cycles.

Images



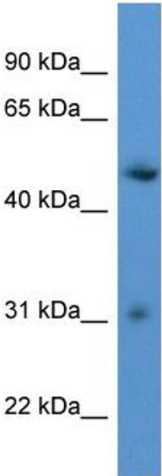
Western Blotting

Image 1. WB Suggested Anti-ROPN1L Antibody Titration:

0.2-1 ug/ml

ELISA Titer: 1:312500

Positive Control: HepG2 cell lysate



Rabbit Anti-ROPN1L Antibody
Catalog Number: ARP60572
Lot Number: QC31297
Lane: HepG2 Cell Lysate

Antibody Titration: 1.0µg/ml
Gel Concentration: 12%

Western Blotting

Image 2. WB Suggested Anti-ROPN1L

Antibody Titration: 0.2-1 µg/mL ELISA Titer: 1::12500

Positive Control: HepG2 cell lysate