

Datasheet for ABIN2788498
anti-FSD1L antibody (C-Term)[Go to Product page](#)

1 Image

Overview

Quantity:	100 µL
Target:	FSD1L
Binding Specificity:	C-Term
Reactivity:	Human, Rat, Mouse, Cow, Guinea Pig, Horse, Dog, Rabbit
Host:	Rabbit
Clonality:	Polyclonal
Conjugate:	This FSD1L antibody is un-conjugated
Application:	Western Blotting (WB)

Product Details

Immunogen:	The immunogen is a synthetic peptide directed towards the C-terminal region of Human FSD1L
Sequence:	TQPVLPGFMV WCGGLSLSTG MQVPSAVRTL QKSENGMTGS ASSLNNVVTQ
Predicted Reactivity:	Cow: 86%, Dog: 100%, Guinea Pig: 100%, Horse: 100%, Human: 100%, Mouse: 93%, Rabbit: 86%, Rat: 100%
Characteristics:	This is a rabbit polyclonal antibody against FSD1L. It was validated on Western Blot.
Purification:	Affinity Purified

Target Details

Target:	FSD1L
Alternative Name:	FSD1L (FSD1L Products)

Target Details

Background: The function of this protein remains unknown.
Protein Interaction Partner: LYN, APP,
Protein Size: 311

Molecular Weight: 34 kDa

Gene ID: 83856

UniProt: [Q8N450](#)

Application Details

Restrictions: For Research Use only

Handling

Format: Liquid

Concentration: 1 mg/mL

Buffer: Liquid. Purified antibody supplied in 1x PBS buffer with 0.09 % (w/v) sodium azide and 2 % sucrose.

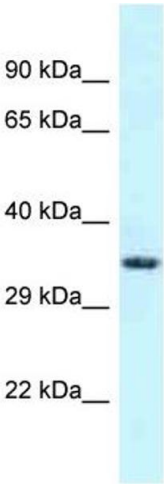
Preservative: Sodium azide

Precaution of Use: This product contains Sodium azide: a POISONOUS AND HAZARDOUS SUBSTANCE which should be handled by trained staff only.

Handling Advice: Avoid repeat freeze-thaw cycles.

Storage: -20 °C

Storage Comment: For short term use, store at 2-8°C up to 1 week. For long term storage, store at -20°C in small aliquots to prevent freeze-thaw cycles.



Western Blotting

Image 1.