



[Go to Product page](#)

Datasheet for ABIN2788500
anti-RAB34 antibody (C-Term)

1 Image

Overview

Quantity:	100 µL
Target:	RAB34
Binding Specificity:	C-Term
Reactivity:	Human, Rat, Mouse, Cow, Rabbit, Dog, Guinea Pig, Horse
Host:	Rabbit
Clonality:	Polyclonal
Conjugate:	This RAB34 antibody is un-conjugated
Application:	Western Blotting (WB)

Product Details

Immunogen:	The immunogen is a synthetic peptide directed towards the C terminal region of human RAB34
Sequence:	FFFRVAALTF EANVLAELEK SGARRIGDVV RINSDDSNLY LTASKKKPTC
Predicted Reactivity:	Cow: 100%, Dog: 93%, Guinea Pig: 93%, Horse: 93%, Human: 100%, Mouse: 92%, Rabbit: 86%, Rat: 100%
Characteristics:	This is a rabbit polyclonal antibody against RAB34. It was validated on Western Blot.
Purification:	Affinity Purified

Target Details

Target:	RAB34
Alternative Name:	RAB34 (RAB34 Products)

Target Details

Background:	RAB proteins, like RAB34, are small GTPases that regulate vesicle budding, docking, and fusion along endocytosis and exocytosis pathways. Alias Symbols: RAB39, RAH Protein Interaction Partner: RALA, UBC, RABGAP1L, CEBPA, RILP, SMAD1, SMAD2, SMAD4, TGFBR1, Protein Size: 259
Molecular Weight:	29 kDa
Gene ID:	83871
NCBI Accession:	NM_031934 , NP_114140
UniProt:	Q9BZG1

Application Details

Application Notes:	Optimal working dilutions should be determined experimentally by the investigator.
Comment:	Antigen size: 259 AA
Restrictions:	For Research Use only

Handling

Format:	Liquid
Concentration:	Lot specific
Buffer:	Liquid. Purified antibody supplied in 1x PBS buffer with 0.09 % (w/v) sodium azide and 2 % sucrose.
Preservative:	Sodium azide
Precaution of Use:	This product contains Sodium azide: a POISONOUS AND HAZARDOUS SUBSTANCE which should be handled by trained staff only.
Handling Advice:	Avoid repeated freeze-thaw cycles.
Storage:	-20 °C
Storage Comment:	For short term use, store at 2-8°C up to 1 week. For long term storage, store at -20°C in small aliquots to prevent freeze-thaw cycles.

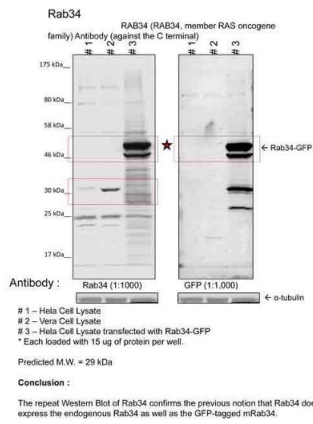


Image submitted by Dr. Jakob Szwedo from Dr. Lupashin's lab at The University of Arkansas

Western Blotting

Image 1. Sample Type: 1. Human Cervical Cancer Cell Lysate (15ug)

2. Monkey Fibroblast Cell Lysate (15ug)

Primary Dilution: 1:1000

Secondary Antibody: goat anti-Rabbit

Secondary Dilution: 1:40,000

Image Submitted by: Dr. Jakob Szwedo, Dr. Lupashin's Lab

University of Arkansas for Medical Sciences.