

Datasheet for ABIN2788506
anti-TM2D2 antibody (Middle Region)[Go to Product page](#)

2 Images

Overview

Quantity:	100 µL
Target:	TM2D2
Binding Specificity:	Middle Region
Reactivity:	Human, Guinea Pig, Rabbit, Rat, Cow, Dog, Goat, Horse, Mouse, Zebrafish (Danio rerio)
Host:	Rabbit
Clonality:	Polyclonal
Conjugate:	This TM2D2 antibody is un-conjugated
Application:	Western Blotting (WB)

Product Details

Immunogen:	The immunogen is a synthetic peptide directed towards the middle region of human TM2D2
Sequence:	QELGYGCLKF GGQAYS DVEH TSVQCHALDG IECASPRTFL RENKPCIKYT
Predicted Reactivity:	Cow: 92%, Dog: 93%, Goat: 92%, Guinea Pig: 100%, Horse: 92%, Human: 100%, Mouse: 92%, Rabbit: 100%, Rat: 100%, Zebrafish: 77%
Characteristics:	This is a rabbit polyclonal antibody against TM2D2. It was validated on Western Blot.
Purification:	Affinity Purified

Target Details

Target:	TM2D2
Alternative Name:	TM2D2 (TM2D2 Products)

Target Details

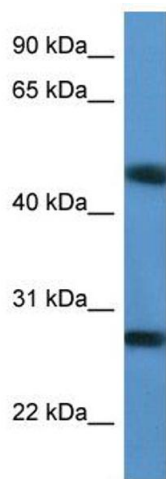
Background:	<p>The protein encoded by this gene contains a structural module related to that of the seven transmembrane domain G protein-coupled receptor superfamily. This protein has sequence and structural similarities to the beta-amyloid binding protein (BBP), but, unlike BBP, it does not regulate a response to beta-amyloid peptide. This protein may have regulatory roles in cell death or proliferation signal cascades.</p> <p>Alias Symbols: BLP1, MGC125813, MGC125814</p> <p>Protein Size: 214</p>
Molecular Weight:	23 kDa
Gene ID:	83877
NCBI Accession:	NM_078473 , NP_510882
UniProt:	Q9BX73

Application Details

Application Notes:	Optimal working dilutions should be determined experimentally by the investigator.
Comment:	Antigen size: 214 AA
Restrictions:	For Research Use only

Handling

Format:	Liquid
Concentration:	Lot specific
Buffer:	Liquid. Purified antibody supplied in 1x PBS buffer with 0.09 % (w/v) sodium azide and 2 % sucrose.
Preservative:	Sodium azide
Precaution of Use:	This product contains Sodium azide: a POISONOUS AND HAZARDOUS SUBSTANCE which should be handled by trained staff only.
Handling Advice:	Avoid repeated freeze-thaw cycles.
Storage:	-20 °C
Storage Comment:	For short term use, store at 2-8°C up to 1 week. For long term storage, store at -20°C in small aliquots to prevent freeze-thaw cycles.



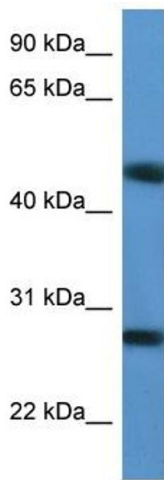
Western Blotting

Image 1. WB Suggested Anti-TM2D2 Antibody Titration:

0.2-1 ug/ml

ELISA Titer: 1:312500

Positive Control: Jurkat cell lysate



Rabbit Anti-TM2D2 Antibody
Catalog Number: ARP60590
Lot Number: QC31309
Lane: Jurkat Cell Lysate

Antibody Titration: 1.0µg/ml
Gel Concentration: 12%

Western Blotting

Image 2. WB Suggested Anti-TM2D2

Antibody Titration: 0.2-1 µg/mL ELISA Titer: 1::12500

Positive Control: Jurkat cell lysate