

Datasheet for ABIN2788510  
**anti-SPSB2 antibody (N-Term)**[Go to Product page](#)

## 2 Images

## Overview

Quantity:	100 µL
Target:	SPSB2
Binding Specificity:	N-Term
Reactivity:	Human, Mouse, Rat, Cow, Rabbit, Guinea Pig, Dog, Zebrafish (Danio rerio)
Host:	Rabbit
Clonality:	Polyclonal
Conjugate:	This SPSB2 antibody is un-conjugated
Application:	Western Blotting (WB), Immunohistochemistry (IHC)

## Product Details

Immunogen:	The immunogen is a synthetic peptide directed towards the N terminal region of human SPSB2
Sequence:	KDCSENIEVK EGGLEYFERRP VAQSTDGARG KRGYSRGLHA WEISWPLEQR
Predicted Reactivity:	Cow: 100%, Dog: 93%, Guinea Pig: 100%, Human: 100%, Mouse: 93%, Rabbit: 100%, Rat: 93%, Zebrafish: 79%
Characteristics:	This is a rabbit polyclonal antibody against SPSB2. It was validated on Western Blot.
Purification:	Affinity Purified

## Target Details

Target:	SPSB2
Alternative Name:	SPSB2 ( <a href="#">SPSB2 Products</a> )

## Target Details

Background:	<p>This gene encodes a suppressor of cytokine signaling (SOCS) family member, and it belongs to the subfamily of proteins containing a central SPRY (repeats in splA and RyR) domain and a C-terminal SOCS box. This gene is present in a gene-rich cluster on chromosome 12p13 in the vicinity of the CD4 antigen and triosephosphate isomerase genes.</p> <p>Alias Symbols: FLJ17395, GRCC9, MGC2519, SSB2</p> <p>Protein Interaction Partner: NOS2, PRMT1, GALNT15, RNF7, CUL5, TCEB2, TCEB1, APP, Ddx4, PAWR, MET,</p> <p>Protein Size: 263</p>
Molecular Weight:	28 kDa
Gene ID:	84727
NCBI Accession:	<a href="#">NM_032641</a> , <a href="#">NP_116030</a>
UniProt:	<a href="#">Q99619</a>

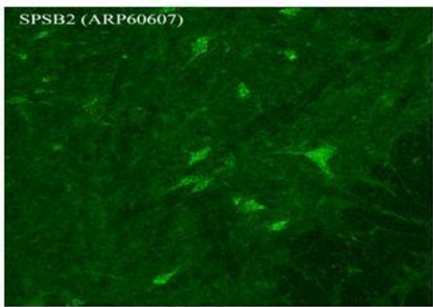
## Application Details

Application Notes:	Optimal working dilutions should be determined experimentally by the investigator.
Comment:	Antigen size: 263 AA
Restrictions:	For Research Use only

## Handling

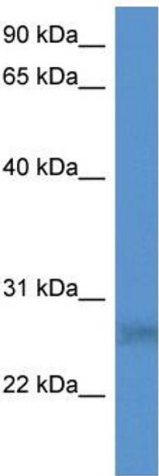
Format:	Liquid
Concentration:	Lot specific
Buffer:	Liquid. Purified antibody supplied in 1x PBS buffer with 0.09 % (w/v) sodium azide and 2 % sucrose.
Preservative:	Sodium azide
Precaution of Use:	This product contains Sodium azide: a POISONOUS AND HAZARDOUS SUBSTANCE which should be handled by trained staff only.
Handling Advice:	Avoid repeated freeze-thaw cycles.
Storage:	-20 °C
Storage Comment:	For short term use, store at 2-8°C up to 1 week. For long term storage, store at -20°C in small aliquots to prevent freeze-thaw cycles.

SPSB2



Green: SPSB2

See IHC 1 Data and Customer Feedback for more Information



Immunohistochemistry

**Image 1.** Sample Type : Rhesus macaque spinal cord  
Primary Antibody Dilution : 1:300 Secondary Antibody : Donkey anti Rabbit 488 Secondary Antibody Dilution : 1:500  
Color/Signal Descriptions : Green: SPSB2 Gene Name : SPSB2 Submitted by : Timur Mavlyutov, Ph. D., Department of Pharmacology, University of Wisconsin Medical School, 1300 University Avenue, Madison, WI 53706

Western Blotting

**Image 2.** WB Suggested Anti-SPSB2 Antibody Titration: 0.2-1 ug/ml ELISA Titer: 1:312500 Positive Control: HepG2 cell lysate