

Datasheet for ABIN2788514
anti-TUBA1C antibody (C-Term)

3 Images

[Go to Product page](#)

Overview

Quantity:	100 µL
Target:	TUBA1C
Binding Specificity:	C-Term
Reactivity:	Human, Mouse, Rat, Dog, Pig, Zebrafish (Danio rerio)
Host:	Rabbit
Clonality:	Polyclonal
Conjugate:	This TUBA1C antibody is un-conjugated
Application:	Western Blotting (WB), Immunohistochemistry (IHC), Immunoprecipitation (IP)

Product Details

Sequence:	EAWARLDHKF DLMYAKRAFV HWYVGEGMEE GEFSEAREDM AALEKDYEEV
Predicted Reactivity:	Dog: 100%, Human: 100%, Mouse: 100%, Pig: 100%, Rat: 100%, Zebrafish: 100%
Characteristics:	This is a rabbit polyclonal antibody against TUBA1C. It was validated on Western Blot.
Purification:	Affinity Purified

Target Details

Target:	TUBA1C
Alternative Name:	TUBA1C (TUBA1C Products)
Background:	Tubulin is the major constituent of microtubules. It binds two moles of GTP, one at an exchangeable site on the beta chain and one at a non-exchangeable site on the alpha-chain.

Target Details

Alias Symbols: MGC10851, MGC14580, TUBA6, bcm948

Protein Interaction Partner: HUWE1, TP53, NEDD1, CEP72, TUBGCP4, CEP250, MAGED2, AURKB, VCP, TUBG1, AURKA, SUMO2, LGALS3BP, EMD, CDC20, AIRE, UBC, MDM2, RPA3, RPA2, RPA1, rev, TUBB8, TUBB, TUBA4B, GAPDH, CDKN2A, TUBB4B, TXNRD1, TUBB2A, TUBA4A, PARK2, FBXO6, NPM1, CD81, HDAC6, RL1, K3

Protein Size: 449

Molecular Weight: 50 kDa

Gene ID: 84790

NCBI Accession: [NM_032704](#), [NP_116093](#)

UniProt: [Q9NY65](#)

Pathways: [Microtubule Dynamics](#), [M Phase](#)

Application Details

Application Notes: Optimal working dilutions should be determined experimentally by the investigator.

Comment: Antigen size: 449 AA

Restrictions: For Research Use only

Handling

Format: Liquid

Concentration: Lot specific

Buffer: Liquid. Purified antibody supplied in 1x PBS buffer with 0.09 % (w/v) sodium azide and 2 % sucrose.

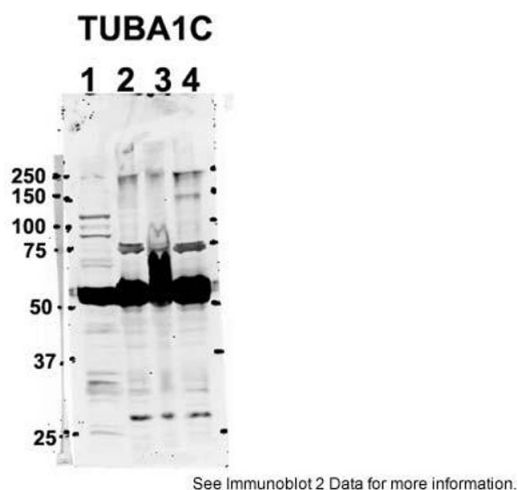
Preservative: Sodium azide

Precaution of Use: This product contains Sodium azide: a POISONOUS AND HAZARDOUS SUBSTANCE which should be handled by trained staff only.

Handling Advice: Avoid repeated freeze-thaw cycles.

Storage: -20 °C

Storage Comment: For short term use, store at 2-8°C up to 1 week. For long term storage, store at -20°C in small aliquots to prevent freeze-thaw cycles.



Western Blotting

Image 1. Sample Type: 1. Human NT-2 cells (60ug)
2. and 3. mouse brain extracts (80ug)
4. rat brain extract (80ug)

Primary Antibody Dilution: 2ug/ml

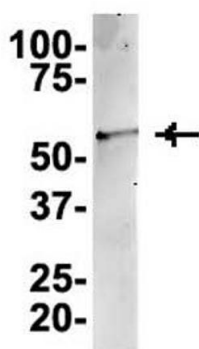
Secondary Antibody: IRDye 800CW goat anti-rabbit from Li-COR Bioscience

Secondary Antibody Dilution: 1: 20,000

Image Submitted by: Yuzhi Chen

University of Arkansas for Medical Science

TUBA1C



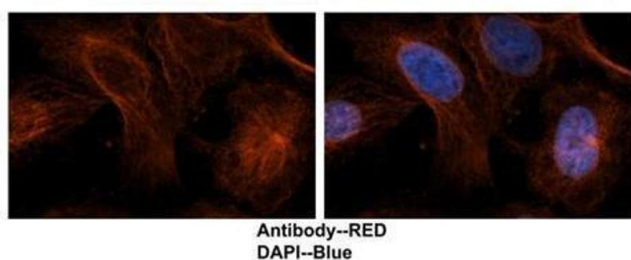
See Other Application 1 Data and Customer Feedback tab for more information.

Western Blotting

Image 2. IP Suggested AntiTUBA1C Antibody

Positive Control: NT2 CELL/BRAIN TISSUE

TUBA1C



See IHC 1 Data and Customer Feedback for more information

Immunohistochemistry

Image 3. Sample Type: Human brain stem cells

Primary Antibody Dilution: 1:500

Secondary Antibody: Goat anti-rabbit Alexa-Fluor 594

Secondary Antibody Dilution: 1:0000

Color/Signal Descriptions: TUBA1C: Red DAPI: Blue

Gene Name: TUBA1C

Submitted by: Dr. Yuzhi Chen, University of Arkansas for

