

Datasheet for ABIN2788523
anti-HSDL1 antibody (C-Term)



[Go to Product page](#)

1 Image

Overview

Quantity:	100 µL
Target:	HSDL1
Binding Specificity:	C-Term
Reactivity:	Human, Rat, Mouse, Dog, Rabbit, Guinea Pig, Cow, Horse
Host:	Rabbit
Clonality:	Polyclonal
Conjugate:	This HSDL1 antibody is un-conjugated
Application:	Western Blotting (WB)

Product Details

Immunogen:	The immunogen is a synthetic peptide directed towards the C terminal region of human HSDL1
Sequence:	STLGISKRTT GYWSHSIQFL FAQYMPEWLW VWGANILNRS LRKEALSCTA
Predicted Reactivity:	Cow: 93%, Dog: 93%, Guinea Pig: 100%, Horse: 93%, Human: 100%, Mouse: 93%, Rabbit: 83%, Rat: 100%
Characteristics:	This is a rabbit polyclonal antibody against HSDL1. It was validated on Western Blot.
Purification:	Affinity Purified

Target Details

Target:	HSDL1
Alternative Name:	HSDL1 (HSDL1 Products)

Target Details

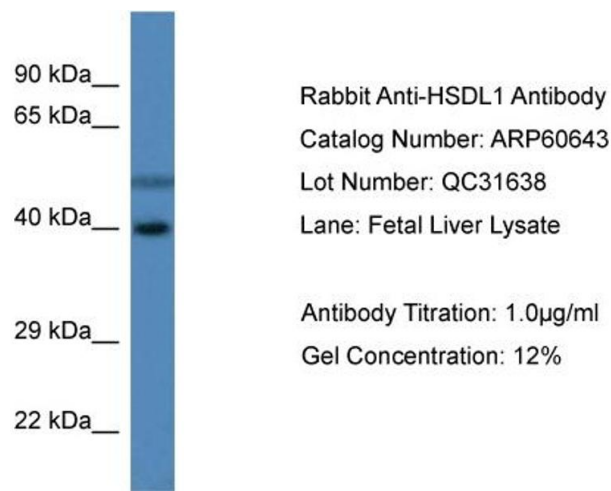
Background:	The function remains unknown. Alias Symbols: MGC125994, MGC125995, MGC126032, SDR12C3 Protein Interaction Partner: UBC, Protein Size: 330
Molecular Weight:	37 kDa
Gene ID:	83693
NCBI Accession:	NM_031463 , NP_113651
UniProt:	Q3SXM5

Application Details

Application Notes:	Optimal working dilutions should be determined experimentally by the investigator.
Comment:	Antigen size: 330 AA
Restrictions:	For Research Use only

Handling

Format:	Liquid
Concentration:	Lot specific
Buffer:	Liquid. Purified antibody supplied in 1x PBS buffer with 0.09 % (w/v) sodium azide and 2 % sucrose.
Preservative:	Sodium azide
Precaution of Use:	This product contains Sodium azide: a POISONOUS AND HAZARDOUS SUBSTANCE which should be handled by trained staff only.
Handling Advice:	Avoid repeated freeze-thaw cycles.
Storage:	-20 °C
Storage Comment:	For short term use, store at 2-8°C up to 1 week. For long term storage, store at -20°C in small aliquots to prevent freeze-thaw cycles.



Western Blotting

Image 1.