

Datasheet for ABIN2788542

**anti-WDR73 antibody (Middle Region)**[Go to Product page](#)**1** Image

## Overview

Quantity:	100 µL
Target:	WDR73
Binding Specificity:	Middle Region
Reactivity:	Human, Dog, Horse, Rabbit
Host:	Rabbit
Clonality:	Polyclonal
Conjugate:	This WDR73 antibody is un-conjugated
Application:	Western Blotting (WB)

## Product Details

Immunogen:	The immunogen is a synthetic peptide directed towards the middle region of human WDR73
Sequence:	VVDLESRKTT YTSDVSDSEE LSSLQVLDAD TFAFCCASGR LGLVDTRQKW
Predicted Reactivity:	Dog: 86%, Horse: 79%, Human: 100%, Rabbit: 77%
Characteristics:	This is a rabbit polyclonal antibody against WDR73. It was validated on Western Blot.
Purification:	Affinity Purified

## Target Details

Target:	WDR73
Alternative Name:	WDR73 ( <a href="#">WDR73 Products</a> )
Background:	The function of this protein remains unknown.

## Target Details

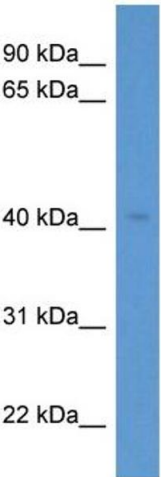
	Alias Symbols: FLJ14888, HSPC264
	Protein Interaction Partner: UBC, UBA1, DAZAP2, TSC22D1, TNFRSF14, TK1, SMN1, CDKN1A, ANXA7,
	Protein Size: 378
Molecular Weight:	42 kDa
Gene ID:	84942
NCBI Accession:	<a href="#">NM_032856</a> , <a href="#">NP_116245</a>
UniProt:	<a href="#">Q6P4I2</a>

## Application Details

Application Notes:	Optimal working dilutions should be determined experimentally by the investigator.
Comment:	Antigen size: 378 AA
Restrictions:	For Research Use only

## Handling

Format:	Liquid
Concentration:	Lot specific
Buffer:	Liquid. Purified antibody supplied in 1x PBS buffer with 0.09 % (w/v) sodium azide and 2 % sucrose.
Preservative:	Sodium azide
Precaution of Use:	This product contains Sodium azide: a POISONOUS AND HAZARDOUS SUBSTANCE which should be handled by trained staff only.
Handling Advice:	Avoid repeated freeze-thaw cycles.
Storage:	-20 °C
Storage Comment:	For short term use, store at 2-8°C up to 1 week. For long term storage, store at -20°C in small aliquots to prevent freeze-thaw cycles.



**Western Blotting**

**Image 1.**