

Datasheet for ABIN2788543
anti-SERAC1 antibody (N-Term)[Go to Product page](#)

1 Image

Overview

Quantity:	100 µL
Target:	SERAC1
Binding Specificity:	N-Term
Reactivity:	Human, Mouse, Guinea Pig, Horse, Rat, Cow, Dog, Pig, Rabbit
Host:	Rabbit
Clonality:	Polyclonal
Conjugate:	This SERAC1 antibody is un-conjugated
Application:	Western Blotting (WB)

Product Details

Immunogen:	The immunogen is a synthetic peptide directed towards the N terminal region of human SERAC1
Sequence:	KTLIGLARSE ESDLRFFLLP PPLPSLKEDS STEEELRQLL ASLPQTELDE
Predicted Reactivity:	Cow: 93%, Dog: 93%, Guinea Pig: 85%, Horse: 79%, Human: 100%, Mouse: 93%, Pig: 93%, Rabbit: 93%, Rat: 100%
Characteristics:	This is a rabbit polyclonal antibody against SERAC1. It was validated on Western Blot.
Purification:	Affinity Purified

Target Details

Target:	SERAC1
---------	--------

Target Details

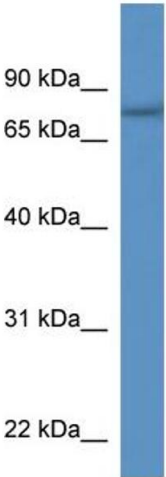
Alternative Name:	SERAC1 (SERAC1 Products)
Background:	The function of this protein remains unknown. Alias Symbols: FLJ14917, FLJ30544 Protein Interaction Partner: APP, Protein Size: 654
Molecular Weight:	74 kDa
Gene ID:	84947
NCBI Accession:	NM_032861 , NP_116250
UniProt:	Q96JX3
Pathways:	Inositol Metabolic Process

Application Details

Application Notes:	Optimal working dilutions should be determined experimentally by the investigator.
Comment:	Antigen size: 654 AA
Restrictions:	For Research Use only

Handling

Format:	Liquid
Concentration:	Lot specific
Buffer:	Liquid. Purified antibody supplied in 1x PBS buffer with 0.09 % (w/v) sodium azide and 2 % sucrose.
Preservative:	Sodium azide
Precaution of Use:	This product contains Sodium azide: a POISONOUS AND HAZARDOUS SUBSTANCE which should be handled by trained staff only.
Handling Advice:	Avoid repeated freeze-thaw cycles.
Storage:	-20 °C
Storage Comment:	For short term use, store at 2-8°C up to 1 week. For long term storage, store at -20°C in small aliquots to prevent freeze-thaw cycles.



Western Blotting

Image 1.