

Datasheet for ABIN2788545  
**anti-SYTL1 antibody (N-Term)**



[Go to Product page](#)

2 Images

## Overview

Quantity:	100 µL
Target:	SYTL1
Binding Specificity:	N-Term
Reactivity:	Human
Host:	Rabbit
Clonality:	Polyclonal
Conjugate:	This SYTL1 antibody is un-conjugated
Application:	Western Blotting (WB)

## Product Details

Immunogen:	The immunogen is a synthetic peptide directed towards the N terminal region of human SYTL1
Sequence:	QAQEDPGQGD QVCAEEADP ELEPASGGEQ EPRPQQAQTK AASQILENGE
Predicted Reactivity:	Human: 100%
Characteristics:	This is a rabbit polyclonal antibody against SYTL1. It was validated on Western Blot.
Purification:	Affinity Purified

## Target Details

Target:	SYTL1
Alternative Name:	SYTL1 ( <a href="#">SYTL1 Products</a> )
Background:	SYTL1 may play a role in vesicle trafficking. It binds phosphatidylinositol 3,4,5-triphosphate. It

## Target Details

---

acts as a RAB27A effector protein and may play a role in cytotoxic granule exocytosis in lymphocytes.

Alias Symbols: FLJ14996, JFC1, SLP1

Protein Interaction Partner: RAB8A, NRXN1, RAB27A, NCF2, NCF1, RAB27B,

Protein Size: 550

---

Molecular Weight: 61 kDa

---

Gene ID: 84958

---

NCBI Accession: [NM\\_032872](#), [NP\\_116261](#)

---

## Application Details

---

Application Notes: Optimal working dilutions should be determined experimentally by the investigator.

---

Comment: Antigen size: 550 AA

---

Restrictions: For Research Use only

---

## Handling

---

Format: Liquid

---

Concentration: Lot specific

---

Buffer: Liquid. Purified antibody supplied in 1x PBS buffer with 0.09 % (w/v) sodium azide and 2 % sucrose.

---

Preservative: Sodium azide

---

Precaution of Use: This product contains Sodium azide: a POISONOUS AND HAZARDOUS SUBSTANCE which should be handled by trained staff only.

---

Handling Advice: Avoid repeated freeze-thaw cycles.

---

Storage: -20 °C

---

Storage Comment: For short term use, store at 2-8°C up to 1 week. For long term storage, store at -20°C in small aliquots to prevent freeze-thaw cycles.

---



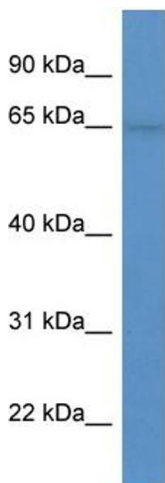
### Western Blotting

#### Image 1. WB Suggested Anti-SYTL1 Antibody Titration:

0.2-1 ug/ml

**ELISA Titer:** 1:62500

**Positive Control:** Hela cell lysate



Rabbit Anti-SYTL1 Antibody  
Catalog Number: ARP60706  
Lot Number: QC31409  
Lane:Hela Cell Lysate

Antibody Titration: 1.0µg/ml  
Gel Concentration: 12%

### Western Blotting

#### Image 2. WB Suggested Anti-SYTL1

Antibody Titration: 0.2-1 µg/mL ELISA Titer: 1:2500

Positive Control: Hela cell lysate