



[Go to Product page](#)

Datasheet for ABIN2788547  
**anti-FBXL20 antibody (Middle Region)**

1 Image

Overview

Quantity:	100 µL
Target:	FBXL20
Binding Specificity:	Middle Region
Reactivity:	Human, Rat, Mouse, Dog, Cow, Guinea Pig, Horse, Rabbit, Zebrafish (Danio rerio)
Host:	Rabbit
Clonality:	Polyclonal
Conjugate:	This FBXL20 antibody is un-conjugated
Application:	Western Blotting (WB)

Product Details

Immunogen:	The immunogen is a synthetic peptide directed towards the middle region of human FBXL20
Sequence:	ISWCDQVTKD GIQALVRGCG GLKALFLKGC TQLEDEALKY IGAHCPELVT
Predicted Reactivity:	Cow: 100%, Dog: 100%, Guinea Pig: 100%, Horse: 100%, Human: 100%, Mouse: 100%, Rabbit: 100%, Rat: 100%, Zebrafish: 100%
Characteristics:	This is a rabbit polyclonal antibody against FBXL20. It was validated on Western Blot.
Purification:	Affinity Purified

Target Details

Target:	FBXL20
Alternative Name:	FBXL20 ( <a href="#">FBXL20 Products</a> )

## Target Details

---

Background: Members of the F-box protein family, such as FBXL20, are characterized by an approximately 40-amino acid F-box motif. SCF complexes, formed by SKP1, cullin, and F-box proteins, act as protein-ubiquitin ligases. F-box proteins interact with SKP1 through the F box, and they interact with ubiquitination targets through other protein interaction domains

Alias Symbols: FLJ21037, Fbl2, Fbl20, MGC15482, SCR, SCRAPPER

Protein Interaction Partner: UBC, CUL1,

Protein Size: 436

---

Molecular Weight: 48 kDa

---

Gene ID: 84961

---

NCBI Accession: [NM\\_032875](#), [NP\\_116264](#)

---

UniProt: [Q96IG2](#)

## Application Details

---

Application Notes: Optimal working dilutions should be determined experimentally by the investigator.

---

Comment: Antigen size: 436 AA

---

Restrictions: For Research Use only

## Handling

---

Format: Liquid

---

Concentration: Lot specific

---

Buffer: Liquid. Purified antibody supplied in 1x PBS buffer with 0.09 % (w/v) sodium azide and 2 % sucrose.

---

Preservative: Sodium azide

---

Precaution of Use: This product contains Sodium azide: a POISONOUS AND HAZARDOUS SUBSTANCE which should be handled by trained staff only.

---

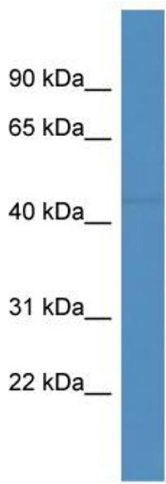
Handling Advice: Avoid repeated freeze-thaw cycles.

---

Storage: -20 °C

---

Storage Comment: For short term use, store at 2-8°C up to 1 week. For long term storage, store at -20°C in small aliquots to prevent freeze-thaw cycles.



Rabbit Anti-FBXL20 Antibody  
Catalog Number: ARP60708  
Lot Number: QC31411  
Lane: COLO205 Cell Lysate

Antibody Titration: 1.0µg/ml  
Gel Concentration: 12%

### Western Blotting

**Image 1.**