



[Go to Product page](#)

Datasheet for ABIN2788552
anti-XAGE1D antibody (C-Term)

1 Image

Overview

Quantity:	100 µL
Target:	XAGE1D
Binding Specificity:	C-Term
Reactivity:	Human, Dog, Pig
Host:	Rabbit
Clonality:	Polyclonal
Conjugate:	This XAGE1D antibody is un-conjugated
Application:	Western Blotting (WB)

Product Details

Sequence:	QCATWKVICK SCISQTPGIN LDLGSGVKVK IIPKEEHCKM PEAGEEQPQV
Predicted Reactivity:	Dog: 83%, Human: 100%, Pig: 91%
Characteristics:	This is a rabbit polyclonal antibody against XAGE1D. It was validated on Western Blot.
Purification:	Affinity Purified

Target Details

Target:	XAGE1D
Alternative Name:	XAGE1D (XAGE1D Products)
Background:	This gene is a member of the XAGE subfamily, which belongs to the GAGE family. The GAGE genes are expressed in a variety of tumors and in some fetal and reproductive tissues. This

Target Details

gene is strongly expressed in Ewing's sarcoma, alveolar rhabdomyosarcoma and normal testis. The protein encoded by this gene contains a nuclear localization signal and shares a sequence similarity with other GAGE/PAGE proteins. Because of the expression pattern and the sequence similarity, this protein also belongs to a family of CT (cancer-testis) antigens.

Alias Symbols: CT12.1D, CTP9, XAGE1A, XAGE1B, XAGE1C, XAGE1E, CT12.1

Protein Size: 160

Molecular Weight: 18 kDa

Gene ID: 9503

NCBI Accession: [NM_133431](#), [NP_597674](#)

Application Details

Application Notes: Optimal working dilutions should be determined experimentally by the investigator.

Comment: Antigen size: 160 AA

Restrictions: For Research Use only

Handling

Format: Liquid

Concentration: Lot specific

Buffer: Liquid. Purified antibody supplied in 1x PBS buffer with 0.09 % (w/v) sodium azide and 2 % sucrose.

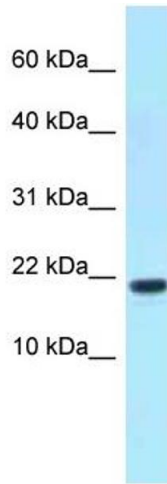
Preservative: Sodium azide

Precaution of Use: This product contains Sodium azide: a POISONOUS AND HAZARDOUS SUBSTANCE which should be handled by trained staff only.

Handling Advice: Avoid repeated freeze-thaw cycles.

Storage: -20 °C

Storage Comment: For short term use, store at 2-8°C up to 1 week. For long term storage, store at -20°C in small aliquots to prevent freeze-thaw cycles.



Western Blotting

Image 1. WB Suggested Anti-XAGE1D Antibody Titration:
1.0 ug/ml Positive Control: Fetal kidney