

Datasheet for ABIN2788553
anti-IFNA13 antibody (C-Term)[Go to Product page](#)

1 Image

Overview

Quantity:	100 µL
Target:	IFNA13
Binding Specificity:	C-Term
Reactivity:	Human, Sheep, Cow, Dog, Goat, Pig
Host:	Rabbit
Clonality:	Polyclonal
Conjugate:	This IFNA13 antibody is un-conjugated
Application:	Western Blotting (WB)

Product Details

Immunogen:	The immunogen is a synthetic peptide directed towards the C terminal region of human IFNA13
Sequence:	ILAVKKYFRR ITLYLTEKKY SPCAWEVVRA EIMRSLSLST NLQERLRRKE
Predicted Reactivity:	Cow: 100%, Dog: 83%, Goat: 83%, Human: 100%, Pig: 92%, Sheep: 83%
Characteristics:	This is a rabbit polyclonal antibody against IFNA13. It was validated on Western Blot.
Purification:	Affinity Purified

Target Details

Target:	IFNA13
Alternative Name:	IFNA13 (IFNA13 Products)
Background:	IFNA13 is produced by macrophages, IFN-alpha have antiviral activities. Interferon stimulates

Target Details

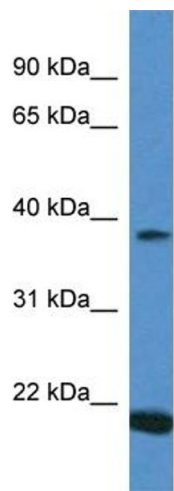
	the production of two enzymes: a protein kinase and an oligoadenylate synthetase. Alias Symbols: IFNA1 Protein Size: 189
Molecular Weight:	21 kDa
Gene ID:	3447
NCBI Accession:	NM_006900 , NP_008831
UniProt:	P01562
Pathways:	JAK-STAT Signaling , Hepatitis C

Application Details

Application Notes:	Optimal working dilutions should be determined experimentally by the investigator.
Comment:	Antigen size: 189 AA
Restrictions:	For Research Use only

Handling

Format:	Liquid
Concentration:	Lot specific
Buffer:	Liquid. Purified antibody supplied in 1x PBS buffer with 0.09 % (w/v) sodium azide and 2 % sucrose.
Preservative:	Sodium azide
Precaution of Use:	This product contains Sodium azide: a POISONOUS AND HAZARDOUS SUBSTANCE which should be handled by trained staff only.
Handling Advice:	Avoid repeated freeze-thaw cycles.
Storage:	-20 °C
Storage Comment:	For short term use, store at 2-8°C up to 1 week. For long term storage, store at -20°C in small aliquots to prevent freeze-thaw cycles.



Rabbit Anti-IFNA13 Antibody
Catalog Number: ARP60732
Lot Number: QC31665
Lane: Placenta Lysate

Antibody Titration: 1.0µg/ml
Gel Concentration: 12%

Western Blotting

Image 1.