

Datasheet for ABIN2788557  
**anti-IL20RB antibody (Middle Region)**[Go to Product page](#)

## 1 Image

## Overview

Quantity:	100 µL
Target:	IL20RB
Binding Specificity:	Middle Region
Reactivity:	Human, Mouse, Rat, Cow, Dog, Horse, Pig, Rabbit
Host:	Rabbit
Clonality:	Polyclonal
Conjugate:	This IL20RB antibody is un-conjugated
Application:	Western Blotting (WB)

## Product Details

Immunogen:	The immunogen is a synthetic peptide directed towards the middle region of Mouse IL20rb
Sequence:	LEDLGPQFEF LVVYWRREPG AAEHVKMVRSGDIPVHLETMEPGAMYCVKA
Predicted Reactivity:	Cow: 85%, Dog: 86%, Horse: 86%, Human: 100%, Mouse: 92%, Pig: 93%, Rabbit: 86%, Rat: 77%
Characteristics:	This is a rabbit polyclonal antibody against IL20rb. It was validated on Western Blot.
Purification:	Affinity Purified

## Target Details

Target:	IL20RB
Alternative Name:	IL20rb ( <a href="#">IL20RB Products</a> )
Background:	The function of this protein remains unknown.

## Target Details

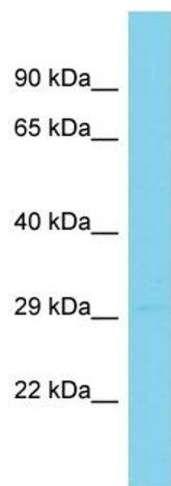
	Alias Symbols: AV228068, Fndc6, Gm186, IL20R2
	Protein Size: 308
Molecular Weight:	31 kDa
Gene ID:	213208
NCBI Accession:	<a href="#">NM_001033543</a> , <a href="#">NP_001028715</a>
UniProt:	<a href="#">E9Q9A6</a>
Pathways:	<a href="#">Regulation of Leukocyte Mediated Immunity</a>

## Application Details

Application Notes:	Optimal working dilutions should be determined experimentally by the investigator.
Comment:	Antigen size: 308 AA
Restrictions:	For Research Use only

## Handling

Format:	Liquid
Concentration:	Lot specific
Buffer:	Liquid. Purified antibody supplied in 1x PBS buffer with 0.09 % (w/v) sodium azide and 2 % sucrose.
Preservative:	Sodium azide
Precaution of Use:	This product contains Sodium azide: a POISONOUS AND HAZARDOUS SUBSTANCE which should be handled by trained staff only.
Handling Advice:	Avoid repeated freeze-thaw cycles.
Storage:	-20 °C
Storage Comment:	For short term use, store at 2-8°C up to 1 week. For long term storage, store at -20°C in small aliquots to prevent freeze-thaw cycles.



Western Blotting

**Image 1.** Host: Rabbit Target Name: IL20rb Sample Type: Mouse Stomach lysates Antibody Dilution: 1.0ug/ml