

Datasheet for ABIN2788558
anti-IL-21 antibody (C-Term)



[Go to Product page](#)

1 Image

Overview

Quantity:	100 µL
Target:	IL-21 (IL21)
Binding Specificity:	C-Term
Reactivity:	Human, Cow, Horse, Pig, Dog, Goat, Sheep
Host:	Rabbit
Clonality:	Polyclonal
Conjugate:	This IL-21 antibody is un-conjugated
Application:	Western Blotting (WB)

Product Details

Immunogen:	The immunogen is a synthetic peptide directed towards the C-terminal region of Human IL21
Sequence:	ERIINVSIIKK LKRKPPSTNA GRRQKHRLTC PSCDSYEKKP PKEFLERFKS
Predicted Reactivity:	Cow: 79%, Dog: 86%, Goat: 86%, Horse: 79%, Human: 100%, Pig: 86%, Sheep: 86%
Characteristics:	This is a rabbit polyclonal antibody against IL21. It was validated on Western Blot.
Purification:	Affinity Purified

Target Details

Target:	IL-21 (IL21)
Alternative Name:	IL21 (IL21 Products)
Background:	This gene encodes a member of the common-gamma chain family of cytokines with

Target Details

immunoregulatory activity. The encoded protein plays a role in both the innate and adaptive immune responses by inducing the differentiation, proliferation and activity of multiple target cells including macrophages, natural killer cells, B cells and cytotoxic T cells. Dysregulation of this gene plays a role in multiple immune-mediated diseases including lupus, psoriasis and chronic inflammatory diseases. Alternatively spliced transcript variants encoding multiple isoforms have been observed for this gene.

Alias Symbols: IL-21, Za11

Protein Interaction Partner: FBXO25, IL21R, DGKA,

Protein Size: 153

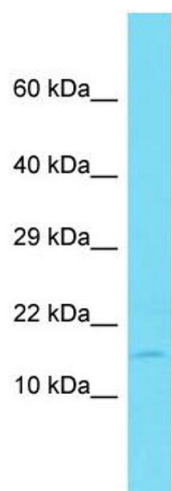
Molecular Weight:	16 kDa
Gene ID:	59067
NCBI Accession:	NM_001207006 , NP_001193935
Pathways:	JAK-STAT Signaling , Regulation of Leukocyte Mediated Immunity , Positive Regulation of Immune Effector Process , Production of Molecular Mediator of Immune Response

Application Details

Application Notes:	Optimal working dilution should be determined by the investigator.
Restrictions:	For Research Use only

Handling

Format:	Liquid
Concentration:	1 mg/mL
Buffer:	Liquid. Purified antibody supplied in 1x PBS buffer with 0.09 % (w/v) sodium azide and 2 % sucrose.
Preservative:	Sodium azide
Precaution of Use:	This product contains Sodium azide: a POISONOUS AND HAZARDOUS SUBSTANCE which should be handled by trained staff only.
Handling Advice:	Avoid repeat freeze-thaw cycles.
Storage:	-20 °C
Storage Comment:	For short term use, store at 2-8°C up to 1 week. For long term storage, store at -20°C in small aliquots to prevent freeze-thaw cycles.



Western Blotting

Image 1. Host: Rabbit Target Name: IL21 Sample Type: Fetal Liver lysates Antibody Dilution: 1.0ug/ml