

Datasheet for ABIN2788582
anti-ACSBG1 antibody (C-Term)[Go to Product page](#)

1 Image

Overview

Quantity:	100 µL
Target:	ACSBG1
Binding Specificity:	C-Term
Reactivity:	Human, Mouse, Rat, Rabbit, Dog, Guinea Pig, Cow
Host:	Rabbit
Clonality:	Polyclonal
Conjugate:	This ACSBG1 antibody is un-conjugated
Application:	Western Blotting (WB)

Product Details

Immunogen:	The immunogen is a synthetic peptide directed towards the C-terminal region of human ACSBG1
Sequence:	NQDAEGIGEI CLWGRTIFMG YLNMEDKTCE AIDEEGWLHT GDAGRLDADG
Predicted Reactivity:	Cow: 93%, Dog: 86%, Guinea Pig: 86%, Human: 100%, Mouse: 93%, Rabbit: 86%, Rat: 93%
Characteristics:	This is a rabbit polyclonal antibody against ACSBG1. It was validated on Western Blot.
Purification:	Affinity Purified

Target Details

Target:	ACSBG1
Alternative Name:	ACSBG1 (ACSBG1 Products)

Target Details

Background: The protein encoded by this gene possesses long-chain acyl-CoA synthetase activity. It is thought to play a central role in brain very long-chain fatty acids metabolism and myelinogenesis.

Alias Symbols: BG, BG1, BGM, LPD, GR-LACS

Protein Size: 482

Molecular Weight: 53 kDa

Gene ID: 23205

NCBI Accession: [NM_001199377](#), [NP_001186306](#)

UniProt: [Q96GR2](#)

Application Details

Restrictions: For Research Use only

Handling

Format: Liquid

Concentration: 1 mg/mL

Buffer: Liquid. Purified antibody supplied in 1x PBS buffer with 0.09 % (w/v) sodium azide and 2 % sucrose.

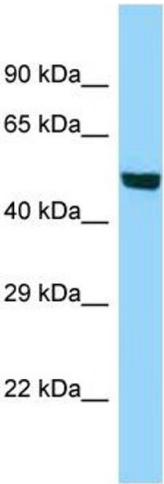
Preservative: Sodium azide

Precaution of Use: This product contains Sodium azide: a POISONOUS AND HAZARDOUS SUBSTANCE which should be handled by trained staff only.

Handling Advice: Avoid repeat freeze-thaw cycles.

Storage: -20 °C

Storage Comment: For short term use, store at 2-8°C up to 1 week. For long term storage, store at -20°C in small aliquots to prevent freeze-thaw cycles.



Western Blotting

Image 1.