

Datasheet for ABIN2788603
anti-PECR antibody (C-Term)[Go to Product page](#)

1 Image

Overview

Quantity:	100 µL
Target:	PECR
Binding Specificity:	C-Term
Reactivity:	Human, Rat, Guinea Pig, Horse
Host:	Rabbit
Clonality:	Polyclonal
Conjugate:	This PECR antibody is un-conjugated
Application:	Western Blotting (WB)

Product Details

Sequence:	ITGQSVDVDG GRSLYTHSYE VPDHDNWPKG AGDLSVVKKM KETFKEKAKL
Predicted Reactivity:	Guinea Pig: 86%, Horse: 86%, Human: 100%, Rat: 86%
Characteristics:	This is a rabbit polyclonal antibody against PECR. It was validated on Western Blot.
Purification:	Affinity Purified

Target Details

Target:	PECR
Alternative Name:	PECR (PECR Products)
Background:	The function of this protein remains unknown. Alias Symbols: DCRRP, HPDHASE, HSA250303, PVIARL, SDR29C1, TERP

Target Details

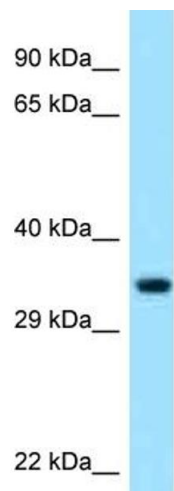
	Protein Interaction Partner: PEX5, ISL1, Protein Size: 303
Molecular Weight:	32 kDa
Gene ID:	55825
NCBI Accession:	NM_018441 , NP_060911
UniProt:	Q9BY49

Application Details

Application Notes:	Optimal working dilutions should be determined experimentally by the investigator.
Comment:	Antigen size: 303 AA
Restrictions:	For Research Use only

Handling

Format:	Liquid
Concentration:	Lot specific
Buffer:	Liquid. Purified antibody supplied in 1x PBS buffer with 0.09 % (w/v) sodium azide and 2 % sucrose.
Preservative:	Sodium azide
Precaution of Use:	This product contains Sodium azide: a POISONOUS AND HAZARDOUS SUBSTANCE which should be handled by trained staff only.
Handling Advice:	Avoid repeated freeze-thaw cycles.
Storage:	-20 °C
Storage Comment:	For short term use, store at 2-8°C up to 1 week. For long term storage, store at -20°C in small aliquots to prevent freeze-thaw cycles.



Rabbit Anti-PECR Antibody
Catalog Number: ARP60839
Lot Number: QC33542
Lane: HCT15 Cell Lysate

Antibody Titration: 1.0µg/ml
Gel Concentration: 12%

Western Blotting

Image 1.