

Datasheet for ABIN2788609
anti-RAB33B antibody (Middle Region)



[Go to Product page](#)

2 Images

Overview

Quantity:	100 µL
Target:	RAB33B
Binding Specificity:	Middle Region
Reactivity:	Human, Mouse, Rat, Dog, Guinea Pig, Horse, Cow, Rabbit, Zebrafish (Danio rerio), Saccharomyces cerevisiae
Host:	Rabbit
Clonality:	Polyclonal
Conjugate:	This RAB33B antibody is un-conjugated
Application:	Western Blotting (WB)

Product Details

Sequence:	ERIKIQLWDT AGQERFRKSM VQHYYRNVHA VVFVYDMTNM ASFHSLPSWI
Predicted Reactivity:	Cow: 93%, Dog: 100%, Guinea Pig: 100%, Horse: 100%, Human: 100%, Mouse: 100%, Rabbit: 100%, Rat: 100%, Yeast: 92%, Zebrafish: 100%
Characteristics:	This is a rabbit polyclonal antibody against RAB33B. It was validated on Western Blot.
Purification:	Affinity Purified

Target Details

Target:	RAB33B
Alternative Name:	RAB33B (RAB33B Products)

Target Details

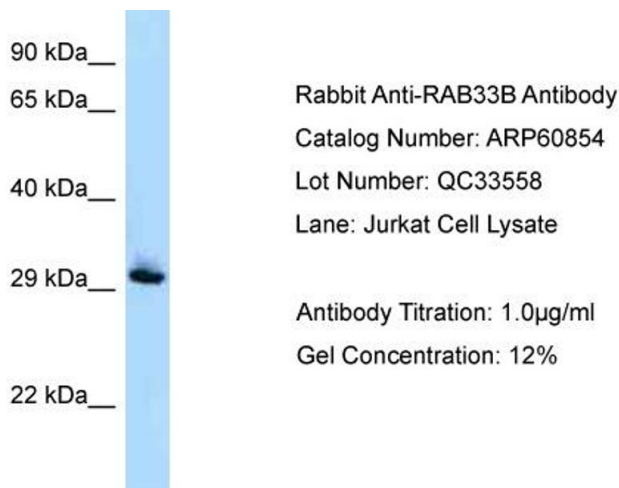
Background:	Small GTP-binding proteins of the RAB family, such as RAB33B, play important roles at defined steps of vesicular transport in protein secretion and the endocytosis pathway. Alias Symbols: DKFZp434G099, MGC138182 Protein Interaction Partner: MAP1LC3A, ATG16L1, USP6, UBC, RABGEF1, RABEP1, GOLGA2, TGFBR1, ACVR1, Protein Size: 229
Molecular Weight:	26 kDa
Gene ID:	83452
NCBI Accession:	NM_031296 , NP_112586
UniProt:	Q9H082

Application Details

Application Notes:	Optimal working dilutions should be determined experimentally by the investigator.
Comment:	Antigen size: 229 AA
Restrictions:	For Research Use only

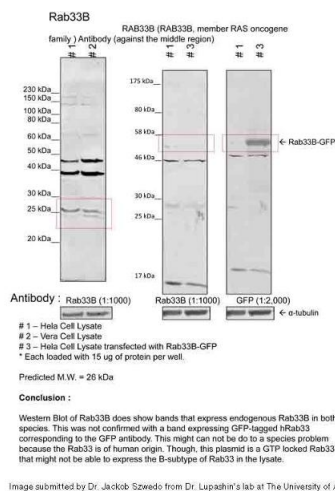
Handling

Format:	Liquid
Concentration:	Lot specific
Buffer:	Liquid. Purified antibody supplied in 1x PBS buffer with 0.09 % (w/v) sodium azide and 2 % sucrose.
Preservative:	Sodium azide
Precaution of Use:	This product contains Sodium azide: a POISONOUS AND HAZARDOUS SUBSTANCE which should be handled by trained staff only.
Handling Advice:	Avoid repeated freeze-thaw cycles.
Storage:	-20 °C
Storage Comment:	For short term use, store at 2-8°C up to 1 week. For long term storage, store at -20°C in small aliquots to prevent freeze-thaw cycles.



Western Blotting

Image 1.



Western Blotting

Image 2. Sample Type: 1. Human Cervical Cancer Cell Lysate (15ug)
 2. Monkey Fibroblast Cell Lysate (15ug)
Primary Dilution: 1:1000
Secondary Antibody: goat anti-Rabbit
Secondary Dilution: 1:40,000
Image Submitted by: Dr. Jakob Szewedo, Dr. Lupashin's Lab
 University of Arkansas for Medical Sciences.