

Datasheet for ABIN2788650

anti-Superoxide dismutase copper chaperone antibody (C-Term)



[Go to Product page](#)

2 Images

Overview

Quantity:	100 µL
Target:	Superoxide dismutase copper chaperone (CCS)
Binding Specificity:	C-Term
Reactivity:	Human, Mouse, Rat, Pig, Rabbit, Cow, Dog, Horse
Host:	Rabbit
Clonality:	Polyclonal
Conjugate:	This Superoxide dismutase copper chaperone antibody is un-conjugated
Application:	Western Blotting (WB)

Product Details

Sequence:	LACGIIARSA GLFQNPQKIC SCDGLTIWEE RGRPIAGKGR KESAQPPAHL
Predicted Reactivity:	Cow: 86%, Dog: 79%, Horse: 86%, Human: 100%, Mouse: 86%, Pig: 86%, Rabbit: 93%, Rat: 86%
Characteristics:	This is a rabbit polyclonal antibody against CCS. It was validated on Western Blot.
Purification:	Affinity Purified

Target Details

Target:	Superoxide dismutase copper chaperone (CCS)
Alternative Name:	CCS (CCS Products)
Background:	Copper chaperone for superoxide dismutase specifically delivers Cu to copper/zinc superoxide dismutase and may activate copper/zinc superoxide dismutase through direct insertion of the

Target Details

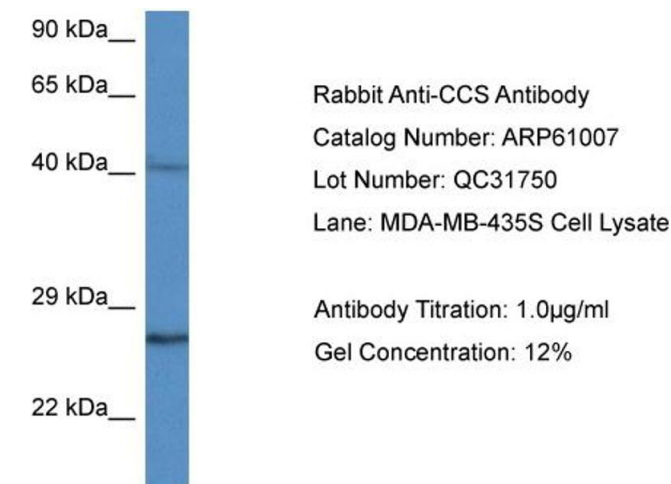
	Cu cofactor.
	Alias Symbols: MGC138260
	Protein Interaction Partner: SLC31A1, SOD1, UBC, XIAP, YWHAG, CCS, APBA1,
	Protein Size: 274
Molecular Weight:	29 kDa
Gene ID:	9973
NCBI Accession:	NM_005125 , NP_005116
UniProt:	O14618
Pathways:	Transition Metal Ion Homeostasis

Application Details

Application Notes:	Optimal working dilutions should be determined experimentally by the investigator.
Comment:	Antigen size: 274 AA
Restrictions:	For Research Use only

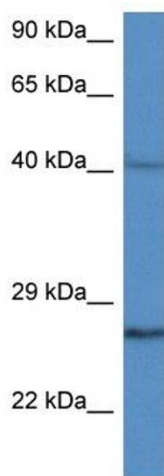
Handling

Format:	Liquid
Concentration:	Lot specific
Buffer:	Liquid. Purified antibody supplied in 1x PBS buffer with 0.09 % (w/v) sodium azide and 2 % sucrose.
Preservative:	Sodium azide
Precaution of Use:	This product contains Sodium azide: a POISONOUS AND HAZARDOUS SUBSTANCE which should be handled by trained staff only.
Handling Advice:	Avoid repeated freeze-thaw cycles.
Storage:	-20 °C
Storage Comment:	For short term use, store at 2-8°C up to 1 week. For long term storage, store at -20°C in small aliquots to prevent freeze-thaw cycles.



Western Blotting

Image 1.



Western Blotting

Image 2. WB Suggested Anti-CCS Antibody Titration: 1.0 µg/mL

Positive Control: MDA-MB-435S Whole Cell

CCS is supported by BioGPS gene expression data to be expressed in MDA-MB435