

Datasheet for ABIN2788652  
**anti-PI15 antibody (N-Term)**[Go to Product page](#)

## 2 Images

## Overview

Quantity:	100 µL
Target:	PI15
Binding Specificity:	N-Term
Reactivity:	Human, Mouse, Rat, Cow, Dog, Guinea Pig, Horse, Rabbit, Zebrafish (Danio rerio)
Host:	Rabbit
Clonality:	Polyclonal
Conjugate:	This PI15 antibody is un-conjugated
Application:	Western Blotting (WB)

## Product Details

Immunogen:	The immunogen is a synthetic peptide directed towards the N terminal region of human PI15
Sequence:	PPTNNFTDIE AALKAQLDSA DIPKARRKRY ISQNDMIAIL DYHNQVRGKV
Predicted Reactivity:	Cow: 93%, Dog: 93%, Guinea Pig: 100%, Horse: 100%, Human: 100%, Mouse: 100%, Rabbit: 93%, Rat: 100%, Zebrafish: 91%
Characteristics:	This is a rabbit polyclonal antibody against PI15. It was validated on Western Blot.
Purification:	Affinity Purified

## Target Details

Target:	PI15
Alternative Name:	PI15 ( <a href="#">PI15 Products</a> )

## Target Details

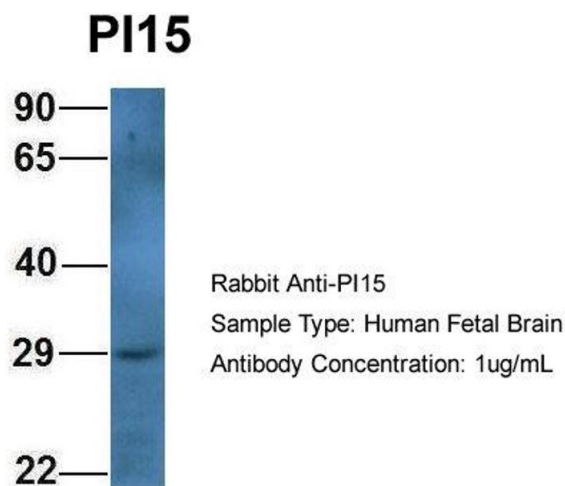
Background:	<p>This gene encodes a trypsin inhibitor. The protein shares similarity to insect venom allergens, mammalian testis-specific proteins and plant pathogenesis-related proteins. It is frequently expressed in human neuroblastoma and glioblastoma cell lines, and thus may play a role in the central nervous system.</p> <p>Alias Symbols: CRISP8, DKFZp686F0366, P24TI, P25TI</p> <p>Protein Size: 258</p>
Molecular Weight:	23 kDa
Gene ID:	51050
NCBI Accession:	<a href="#">NM_015886</a> , <a href="#">NP_056970</a>
UniProt:	<a href="#">O43692</a>

## Application Details

Application Notes:	Optimal working dilutions should be determined experimentally by the investigator.
Comment:	Antigen size: 258 AA
Restrictions:	For Research Use only

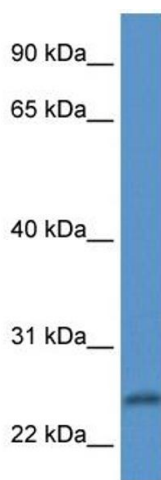
## Handling

Format:	Liquid
Concentration:	Lot specific
Buffer:	Liquid. Purified antibody supplied in 1x PBS buffer with 0.09 % (w/v) sodium azide and 2 % sucrose.
Preservative:	Sodium azide
Precaution of Use:	This product contains Sodium azide: a POISONOUS AND HAZARDOUS SUBSTANCE which should be handled by trained staff only.
Handling Advice:	Avoid repeated freeze-thaw cycles.
Storage:	-20 °C
Storage Comment:	For short term use, store at 2-8°C up to 1 week. For long term storage, store at -20°C in small aliquots to prevent freeze-thaw cycles.



**Western Blotting**

**Image 1.** Host: Rabbit Target Name: PI15 Sample Type: Human Fetal Brain Antibody Dilution: 1.0ug/ml



**Western Blotting**

**Image 2.** WB Suggested Anti-PI15 Antibody Titration: 1.0 ug/ml Positive Control: Fetal Heart