

Datasheet for ABIN2788678
anti-Lipase A antibody (N-Term)

3 Images

[Go to Product page](#)

Overview

Quantity:	100 µL
Target:	Lipase A (LIPA)
Binding Specificity:	N-Term
Reactivity:	Human, Rat, Horse, Pig, Cow, Rabbit, Sheep
Host:	Rabbit
Clonality:	Polyclonal
Conjugate:	This Lipase A antibody is un-conjugated
Application:	Western Blotting (WB)

Product Details

Immunogen:	The immunogen is a synthetic peptide directed towards the N terminal region of human LIPA
Sequence:	SYWGFPSEEEY LVETEDGYIL CLNRIPHGRK NHSDKGPKPV VFLQHGLLAD
Predicted Reactivity:	Cow: 93%, Horse: 86%, Human: 100%, Pig: 100%, Rabbit: 93%, Rat: 86%, Sheep: 93%
Characteristics:	This is a rabbit polyclonal antibody against LIPA. It was validated on Western Blot.
Purification:	Affinity Purified

Target Details

Target:	Lipase A (LIPA)
Alternative Name:	LIPA (LIPA Products)
Background:	This gene encodes lipase A, the lysosomal acid lipase (also known as cholesterol ester

Target Details

hydrolase). This enzyme functions in the lysosome to catalyze the hydrolysis of cholesteryl esters and triglycerides. Mutations in this gene can result in Wolman disease and cholesteryl ester storage disease. Alternatively spliced transcript variants encoding the same protein have been found for this gene.

Alias Symbols: CESD, LAL

Protein Interaction Partner: ELAVL1, UBC,

Protein Size: 399

Molecular Weight: 43 kDa

Gene ID: 3988

NCBI Accession: [NM_000235](#), [NP_000226](#)

UniProt: [P38571](#)

Application Details

Application Notes: Optimal working dilutions should be determined experimentally by the investigator.

Comment: Antigen size: 399 AA

Restrictions: For Research Use only

Handling

Format: Liquid

Concentration: Lot specific

Buffer: Liquid. Purified antibody supplied in 1x PBS buffer with 0.09 % (w/v) sodium azide and 2 % sucrose.

Preservative: Sodium azide

Precaution of Use: This product contains Sodium azide: a POISONOUS AND HAZARDOUS SUBSTANCE which should be handled by trained staff only.

Handling Advice: Avoid repeated freeze-thaw cycles.

Storage: -20 °C

Storage Comment: For short term use, store at 2-8°C up to 1 week. For long term storage, store at -20°C in small aliquots to prevent freeze-thaw cycles.

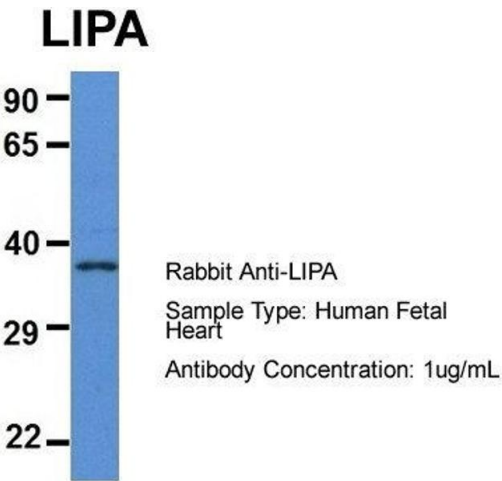


Western Blotting

Image 1. WB Suggested Anti-LIPA Antibody Titration: 1.0 µg/mL

Positive Control: HepG2 Whole Cell

LIPA is supported by BioGPS gene expression data to be expressed in HepG2



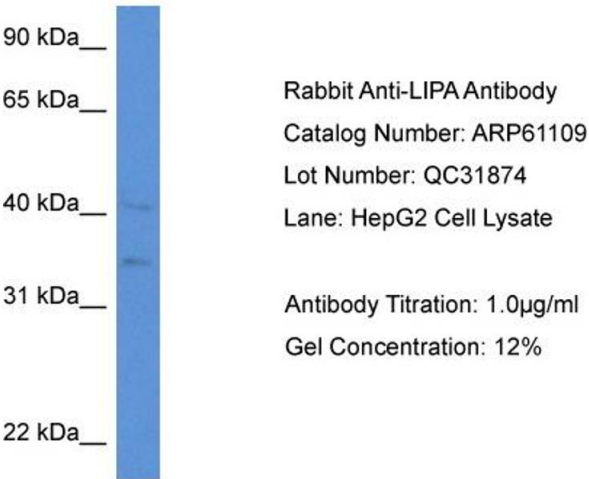
Western Blotting

Image 2. Host: Rabbit

Target Name: LIPA

Sample Tissue: Human Fetal Heart

Antibody Dilution: 1.0 µg/mL



Western Blotting

Image 3.