

Datasheet for ABIN2788686
anti-SORD antibody (N-Term)[Go to Product page](#)

2 Images

Overview

Quantity:	100 µL
Target:	SORD
Binding Specificity:	N-Term
Reactivity:	Human, Mouse, Rat, Cow, Dog, Sheep, Rabbit, Pig, Guinea Pig, Horse
Host:	Rabbit
Clonality:	Polyclonal
Conjugate:	This SORD antibody is un-conjugated
Application:	Western Blotting (WB)

Product Details

Immunogen:	The immunogen is a synthetic peptide directed towards the N terminal region of human SORD
Sequence:	ASGTVEKVGS SVKHLKPGDR VAIEPGAPRE NDEFCKMGY NLSPSIFCA
Predicted Reactivity:	Cow: 93%, Dog: 86%, Guinea Pig: 83%, Horse: 93%, Human: 100%, Mouse: 79%, Pig: 93%, Rabbit: 86%, Rat: 93%, Sheep: 79%
Characteristics:	This is a rabbit polyclonal antibody against SORD. It was validated on Western Blot.
Purification:	Affinity Purified

Target Details

Target:	SORD
Alternative Name:	SORD (SORD Products)

Target Details

Background:	<p>Sorbitol dehydrogenase (SORD, EC 1.1.1.14) catalyzes the interconversion of polyols and their corresponding ketoses, and together with aldose reductase (ALDR1, MIM 103880), makes up the sorbitol pathway that is believed to play an important role in the development of diabetic complications (summarized by Carr and Markham, 1995 [PubMed 8535074]). The first reaction of the pathway (also called the polyol pathway) is the reduction of glucose to sorbitol by ALDR1 with NADPH as the cofactor. SORD then oxidizes the sorbitol to fructose using NAD(+) cofactor.</p> <p>Alias Symbols: SORD1</p> <p>Protein Interaction Partner: SORD, SUMO2, UBC, C12orf10, BCCIP, NAGK, CHORDC1, ACOT7, DDX39A, GDA, THOP1, TCEA1, TALDO1, SMS, PLS3, PGD, NME1, LDHA, FDPS, RELA, C16orf13, FLAD1, PIEZO1, TPM1, RANGAP1, RAD23A, PFDN4, GCLM, ETFA, AKR1B1, NUDCD2, LOC440434, TIPRL, SHBG,</p> <p>Protein Size: 357</p>
-------------	-------------------------------------------------------------------------------------------------------------------------------------------------------------------------------------------------------------------------------------------------------------------------------------------------------------------------------------------------------------------------------------------------------------------------------------------------------------------------------------------------------------------------------------------------------------------------------------------------------------------------------------------------------------------------------------------------------------------------------------------------------------------------------------------------------------------------------------------------------------------------------------------------------------------------------

Molecular Weight:	38 kDa
-------------------	--------

Gene ID:	6652
----------	------

NCBI Accession:	NM_003104 , NP_003095
-----------------	-------------------------------------------------------

UniProt:	Q00796
----------	------------------------

Application Details

Application Notes:	Optimal working dilutions should be determined experimentally by the investigator.
--------------------	------------------------------------------------------------------------------------

Comment:	Antigen size: 357 AA
----------	----------------------

Restrictions:	For Research Use only
---------------	-----------------------

Handling

Format:	Liquid
---------	--------

Concentration:	Lot specific
----------------	--------------

Buffer:	Liquid. Purified antibody supplied in 1x PBS buffer with 0.09 % (w/v) sodium azide and 2 % sucrose.
---------	-----------------------------------------------------------------------------------------------------

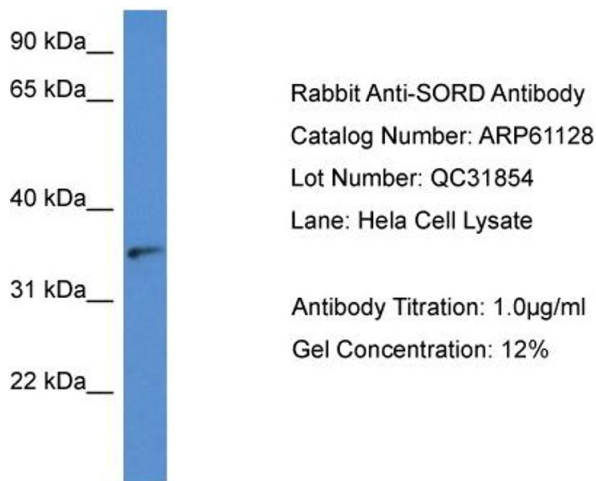
Preservative:	Sodium azide
---------------	--------------

Precaution of Use:	This product contains Sodium azide: a POISONOUS AND HAZARDOUS SUBSTANCE which should be handled by trained staff only.
--------------------	------------------------------------------------------------------------------------------------------------------------

Handling

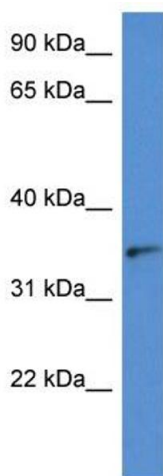
Handling Advice:	Avoid repeated freeze-thaw cycles.
Storage:	-20 °C
Storage Comment:	For short term use, store at 2-8°C up to 1 week. For long term storage, store at -20°C in small aliquots to prevent freeze-thaw cycles.

Images



Western Blotting

Image 1.



Western Blotting

Image 2. WB Suggested Anti-SORD Antibody Titration: 1.0 µg/mL

Positive Control: HeLa Whole Cell

SORD is strongly supported by BioGPS gene expression data to be expressed in Human HeLa cells