

Datasheet for ABIN2788700
anti-PTER antibody (N-Term)[Go to Product page](#)

1 Image

Overview

Quantity:	100 µL
Target:	PTER
Binding Specificity:	N-Term
Reactivity:	Human, Rat, Mouse, Rabbit, Cow, Dog, Guinea Pig, Horse, Pig
Host:	Rabbit
Clonality:	Polyclonal
Conjugate:	This PTER antibody is un-conjugated
Application:	Western Blotting (WB)

Product Details

Immunogen:	The immunogen is a synthetic peptide directed towards the N terminal region of human PTER
Sequence:	NAYSHKENLQ LNQETEAIKE ELLYFKANGG GALVENTTTG ISRDTQTLKR
Predicted Reactivity:	Cow: 92%, Dog: 92%, Guinea Pig: 77%, Horse: 92%, Human: 100%, Mouse: 93%, Pig: 100%, Rabbit: 85%, Rat: 86%
Characteristics:	This is a rabbit polyclonal antibody against PTER. It was validated on Western Blot.
Purification:	Affinity Purified

Target Details

Target:	PTER
Alternative Name:	PTER (PTER Products)

Target Details

Background: The function of this protein remains unknown.
Alias Symbols: RPR-1
Protein Interaction Partner: SUMO1, UBC, NEDD8, XRCC5, PRKDC,
Protein Size: 349

Molecular Weight: 38 kDa

Gene ID: 9317

NCBI Accession: [NM_030664](#), [NP_109589](#)

UniProt: [Q96BW5](#)

Application Details

Application Notes: Optimal working dilutions should be determined experimentally by the investigator.

Comment: Antigen size: 349 AA

Restrictions: For Research Use only

Handling

Format: Liquid

Concentration: Lot specific

Buffer: Liquid. Purified antibody supplied in 1x PBS buffer with 0.09 % (w/v) sodium azide and 2 % sucrose.

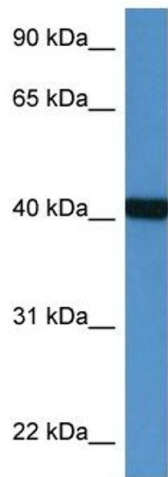
Preservative: Sodium azide

Precaution of Use: This product contains Sodium azide: a POISONOUS AND HAZARDOUS SUBSTANCE which should be handled by trained staff only.

Handling Advice: Avoid repeated freeze-thaw cycles.

Storage: -20 °C

Storage Comment: For short term use, store at 2-8°C up to 1 week. For long term storage, store at -20°C in small aliquots to prevent freeze-thaw cycles.



Rabbit Anti-PTER Antibody
Catalog Number: ARP61159
Lot Number: QC31901
Lane: Fetal Heart Lysate

Antibody Titration: 1.0µg/ml
Gel Concentration: 12%

Western Blotting

Image 1.