

Datasheet for ABIN2788714

## anti-Chromosome 7 Open Reading Frame 20 (C7orf20) (C-Term) antibody



[Go to Product page](#)

### 1 Image

#### Overview

Quantity:	100 µL
Target:	Chromosome 7 Open Reading Frame 20 (C7orf20)
Binding Specificity:	C-Term
Reactivity:	Human, Mouse, Rat, Guinea Pig, Saccharomyces cerevisiae
Host:	Rabbit
Clonality:	Polyclonal
Conjugate:	Un-conjugated
Application:	Western Blotting (WB)

#### Product Details

Immunogen:	The immunogen is a synthetic peptide directed towards the C-terminal region of Human GET4
Sequence:	DRIGQLFFGV PPKQTSSYGG LLGNLLTSLM GSSEQEDGEESPSDGSPIEL
Predicted Reactivity:	Guinea Pig: 77%, Human: 100%, Mouse: 77%, Rat: 77%, Yeast: 77%
Characteristics:	This is a rabbit polyclonal antibody against GET4. It was validated on Western Blot.
Purification:	Affinity Purified

#### Target Details

Target:	Chromosome 7 Open Reading Frame 20 (C7orf20)
Alternative Name:	GET4 ( <a href="#">C7orf20 Products</a> )
Background:	GET4 is a component of the BAT3 complex, a multiprotein complex involved in the post-

## Target Details

translational delivery of tail-anchored (TA) membrane proteins to the endoplasmic reticulum membrane. TA membrane proteins, also named type II transmembrane proteins, contain a single C-terminal transmembrane region. The complex acts by facilitating TA proteins capture by ASNA1/TRC40: it is recruited to ribosomes synthesizing membrane proteins, interacts with the transmembrane region of newly released TA proteins, and transfers them to ASNA1/TRC40 for targeting.

Protein Interaction Partner: HUWE1, PRKAB2, FAF1, VAPB, SGTA, UBC, RABEP2, LSM8, MTA2, CSTF2, FAF2, BAG6, UBL4A, VCP, EXOC2, SEC61B, TRA, AMFR, KEAP1, TMEM256, KIAA1377, ATP5H, KIFC2, EEF1G, UBAC2, SNCAIP, PLK1, PRKCSH, KAT5, TTR, PTMS, SOD2, CDKN1A, CAPNS1, WRAP73,  
Protein Size: 274

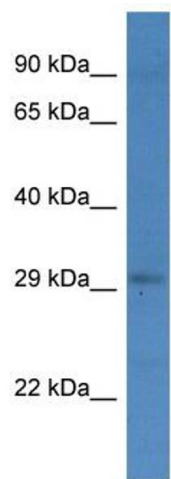
Molecular Weight:	30 kDa
Gene ID:	51608

## Application Details

Restrictions:	For Research Use only
---------------	-----------------------

## Handling

Format:	Liquid
Concentration:	1 mg/mL
Buffer:	Liquid. Purified antibody supplied in 1x PBS buffer with 0.09 % (w/v) sodium azide and 2 % sucrose.
Preservative:	Sodium azide
Precaution of Use:	This product contains Sodium azide: a POISONOUS AND HAZARDOUS SUBSTANCE which should be handled by trained staff only.
Handling Advice:	Avoid repeat freeze-thaw cycles.
Storage:	-20 °C
Storage Comment:	For short term use, store at 2-8°C up to 1 week. For long term storage, store at -20°C in small aliquots to prevent freeze-thaw cycles.



Western Blotting

Image 1.