



[Go to Product page](#)

Datasheet for ABIN2788740  
**anti-Cullin 3 antibody (C-Term)**

2 Images

Overview

Quantity:	100 µL
Target:	Cullin 3 (CUL3)
Binding Specificity:	C-Term
Reactivity:	Human, Mouse, Rat, Zebrafish (Danio rerio), Cow, Guinea Pig, Horse, Rabbit, Dog
Host:	Rabbit
Clonality:	Polyclonal
Conjugate:	This Cullin 3 antibody is un-conjugated
Application:	Western Blotting (WB), Immunohistochemistry (IHC)

Product Details

Immunogen:	The immunogen is a synthetic peptide directed towards the C terminal region of human CUL3
Sequence:	QETDIPEREL VRALQSLACG KPTQRVLTKE PKSKEIENGH IFTVNDQFTS
Predicted Reactivity:	Cow: 100%, Dog: 100%, Guinea Pig: 100%, Horse: 100%, Human: 100%, Mouse: 93%, Rabbit: 100%, Rat: 100%, Zebrafish: 100%
Characteristics:	This is a rabbit polyclonal antibody against CUL3. It was validated on Western Blot.
Purification:	Affinity Purified

Target Details

Target:	Cullin 3 (CUL3)
Alternative Name:	CUL3 ( <a href="#">CUL3 Products</a> )

## Target Details

---

Background:	<p>CUL3 is a component of a ubiquitin E3 ligase that is essential for mitotic division.</p> <p>Alias Symbols: CUL-3, PHA2E</p> <p>Protein Interaction Partner: KCTD6, ABTB1, CUL5, DEK, UBE2D1, UBC, RBX1, KEAP1, NCOA3, TNFAIP1, NEDD8, KCTD13, CUL3, SPOP, KLHL3, RHOA, ZMAT4, GMCL1, KLHL12, KCTD9, KLHL2, KLHL22, BTBD2, BTBD1, WDFY4, WDR48, LRRC7, KLHL42, WDR35, LRFN2, WDTC1, TRIM32, NLRP1, DMWD, HIRA, PHIP, PAK1IP1</p> <p>Protein Size: 768</p>
Molecular Weight:	84 kDa
Gene ID:	8452
NCBI Accession:	<a href="#">NM_003590</a> , <a href="#">NP_003581</a>
UniProt:	<a href="#">Q13618</a>
Pathways:	<a href="#">M Phase</a>

## Application Details

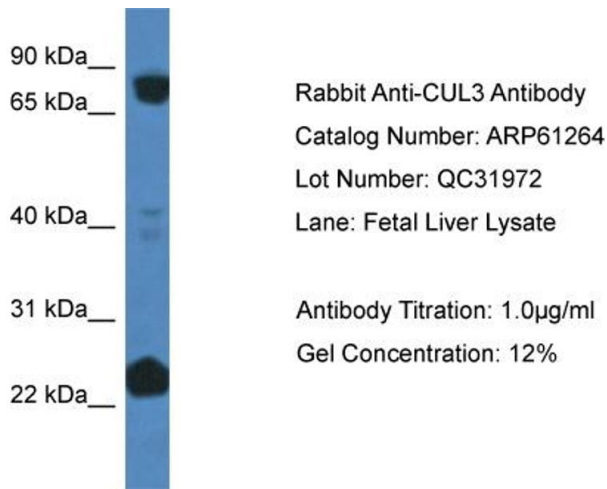
---

Application Notes:	Optimal working dilutions should be determined experimentally by the investigator.
Comment:	Antigen size: 768 AA
Restrictions:	For Research Use only

## Handling

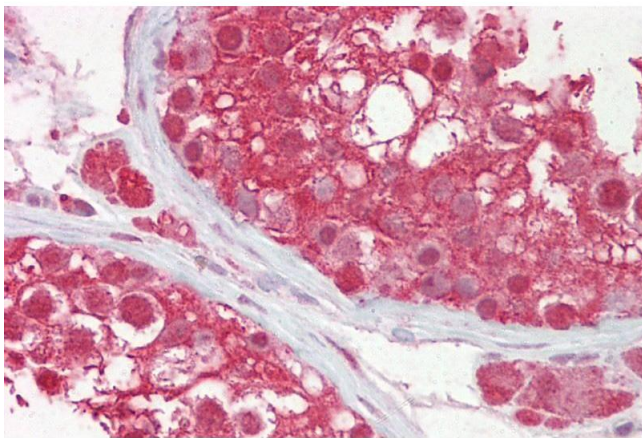
---

Format:	Liquid
Concentration:	Lot specific
Buffer:	Liquid. Purified antibody supplied in 1x PBS buffer with 0.09 % (w/v) sodium azide and 2 % sucrose.
Preservative:	Sodium azide
Precaution of Use:	This product contains Sodium azide: a POISONOUS AND HAZARDOUS SUBSTANCE which should be handled by trained staff only.
Handling Advice:	Avoid repeated freeze-thaw cycles.
Storage:	-20 °C
Storage Comment:	For short term use, store at 2-8°C up to 1 week. For long term storage, store at -20°C in small aliquots to prevent freeze-thaw cycles.



### Western Blotting

**Image 1.**



### Immunohistochemistry

**Image 2.** Immunohistochemistry with Testis tissue at an antibody concentration of 10µg/ml using anti-CUL3 antibody (ARP61264\_P050)