



[Go to Product page](#)

Datasheet for ABIN2788750

anti-Cathepsin L2 antibody (C-Term)

1 Image

Overview

Quantity:	100 µL
Target:	Cathepsin L2 (CTSL2)
Binding Specificity:	C-Term
Reactivity:	Human, Mouse, Rat, Guinea Pig, Horse, Rabbit
Host:	Rabbit
Clonality:	Polyclonal
Conjugate:	This Cathepsin L2 antibody is un-conjugated
Application:	Western Blotting (WB)

Product Details

Sequence:	GFMARAFQYV KENGLDSEE SYPYVAVDEI CKYRPENSVV NDTGFTVVAP
Predicted Reactivity:	Guinea Pig: 79%, Horse: 79%, Human: 100%, Mouse: 79%, Rabbit: 86%, Rat: 79%
Characteristics:	This is a rabbit polyclonal antibody against CTSL2. It was validated on Western Blot.
Purification:	Affinity Purified

Target Details

Target:	Cathepsin L2 (CTSL2)
Alternative Name:	CTSL2 (CTSL2 Products)
Background:	The protein encoded by this gene, a member of the peptidase C1 family, is a lysosomal cysteine proteinase that may play an important role in corneal physiology. This gene is expressed in

Target Details

colorectal and breast carcinomas but not in normal colon, mammary gland, or peritumoral tissues, suggesting a possible role for this gene in tumor processes. Alternatively spliced variants, encoding the same protein, have been identified.

Alias Symbols: CATL2, CTSU, CTSV, MGC125957, CTSL2

Protein Interaction Partner: UBC,

Protein Size: 334

Molecular Weight: 37 kDa

Gene ID: 1515

NCBI Accession: [NM_001333](#), [NP_001324](#)

UniProt: [O60911](#)

Pathways: [Toll-Like Receptors Cascades](#)

Application Details

Application Notes: Optimal working dilutions should be determined experimentally by the investigator.

Comment: Antigen size: 334 AA

Restrictions: For Research Use only

Handling

Format: Liquid

Concentration: Lot specific

Buffer: Liquid. Purified antibody supplied in 1x PBS buffer with 0.09 % (w/v) sodium azide and 2 % sucrose.

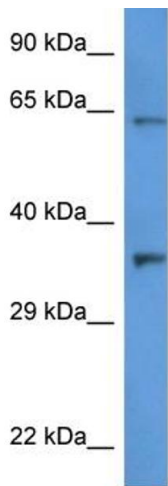
Preservative: Sodium azide

Precaution of Use: This product contains Sodium azide: a POISONOUS AND HAZARDOUS SUBSTANCE which should be handled by trained staff only.

Handling Advice: Avoid repeated freeze-thaw cycles.

Storage: -20 °C

Storage Comment: For short term use, store at 2-8°C up to 1 week. For long term storage, store at -20°C in small aliquots to prevent freeze-thaw cycles.



Rabbit Anti-CTSL2 Antibody
Catalog Number: ARP61284
Lot Number: QC31986
Lane: HT1080 Cell Lysate

Antibody Titration: 1.0µg/ml
Gel Concentration: 12%

Western Blotting

Image 1.