

Datasheet for ABIN2788766
anti-SRSF2 antibody (C-Term)[Go to Product page](#)

2 Images

Overview

Quantity:	100 µL
Target:	SRSF2
Binding Specificity:	C-Term
Reactivity:	Human, Mouse, Rat, Cow, Dog, Guinea Pig, Zebrafish (Danio rerio)
Host:	Rabbit
Clonality:	Polyclonal
Conjugate:	This SRSF2 antibody is un-conjugated
Application:	Western Blotting (WB)

Product Details

Sequence:	KSKSSSVSRS RSRSRSRSRSPPPVSKRE SKSRSRKSP PKSPEEEGAV
Predicted Reactivity:	Cow: 100%, Dog: 100%, Guinea Pig: 100%, Human: 100%, Mouse: 100%, Rat: 100%, Zebrafish: 91%
Characteristics:	This is a rabbit polyclonal antibody against SFRS2. It was validated on Western Blot.
Purification:	Affinity Purified

Target Details

Target:	SRSF2
Alternative Name:	SFRS2 (SRSF2 Products)
Background:	The protein encoded by this gene is a member of the serine/arginine (SR)-rich family of pre-

Target Details

mRNA splicing factors, which constitute part of the spliceosome. Each of these factors contains an RNA recognition motif (RRM) for binding RNA and an RS domain for binding other proteins. The RS domain is rich in serine and arginine residues and facilitates interaction between different SR splicing factors. In addition to being critical for mRNA splicing, the SR proteins have also been shown to be involved in mRNA export from the nucleus and in translation. Two transcript variants encoding the same protein and one non-coding transcript variant have been found for this gene.

Alias Symbols: PR264, SC-35, SC35, SFRS2A, SRp30b, SFRS2

Protein Interaction Partner: KRT40, LZTS2, CEP72, HUWE1, TCF4, TRIM27, KRT31, GOLGA2, EED, PARK2, SRPK2, SRPK1, YWHAE, CIR1, UBC, U2AF1, TRA2B, SRSF4, SRSF3, SRSF2, CSNK2A1, CDK6, EIF4A3, MAGOH, PAXIP1, LIG4, ESR1, BARD1, NUBP2, UBA2, HNRNPDL, ATP6V1F, RUVBL1, XPO1, UBE2B, TTN, TPM4,

Protein Size: 221

Molecular Weight:	25 kDa
-------------------	--------

Gene ID:	6427
----------	------

NCBI Accession:	NM_003016 , NP_003007
-----------------	---

UniProt:	Q01130
----------	------------------------

Application Details

Application Notes:	Optimal working dilutions should be determined experimentally by the investigator.
--------------------	--

Comment:	Antigen size: 221 AA
----------	----------------------

Restrictions:	For Research Use only
---------------	-----------------------

Handling

Format:	Liquid
---------	--------

Concentration:	Lot specific
----------------	--------------

Buffer:	Liquid. Purified antibody supplied in 1x PBS buffer with 0.09 % (w/v) sodium azide and 2 % sucrose.
---------	---

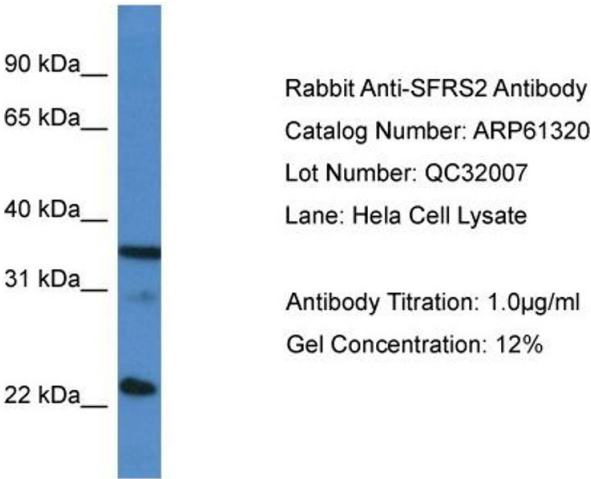
Preservative:	Sodium azide
---------------	--------------

Precaution of Use:	This product contains Sodium azide: a POISONOUS AND HAZARDOUS SUBSTANCE which should be handled by trained staff only.
--------------------	--

Handling

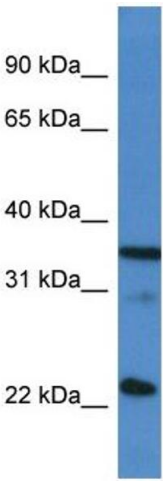
Handling Advice:	Avoid repeated freeze-thaw cycles.
Storage:	-20 °C
Storage Comment:	For short term use, store at 2-8°C up to 1 week. For long term storage, store at -20°C in small aliquots to prevent freeze-thaw cycles.

Images



Western Blotting

Image 1.



Western Blotting

Image 2. WB Suggested Anti-SFRS2 Antibody Titration: 1.0 µg/mL

Positive Control: HeLa Whole Cell

SRSF2 is strongly supported by BioGPS gene expression data to be expressed in Human HeLa cells