

Datasheet for ABIN2788786 anti-EIF6 antibody (C-Term)



[Go to Product page](#)

3 Images

Overview

Quantity:	100 µL
Target:	EIF6
Binding Specificity:	C-Term
Reactivity:	Human, Mouse, Rat, Rabbit, Cow, Sheep, Dog, Guinea Pig, Horse, Saccharomyces cerevisiae, Zebrafish (Danio rerio)
Host:	Rabbit
Clonality:	Polyclonal
Conjugate:	This EIF6 antibody is un-conjugated
Application:	Western Blotting (WB)

Product Details

Sequence:	QVLVGSYCVF SNQGGLVHPK TSIEDQDELS SLLQVPLVAG TVNRGSEVIA
Predicted Reactivity:	Cow: 100%, Dog: 100%, Guinea Pig: 100%, Horse: 100%, Human: 100%, Mouse: 100%, Rabbit: 100%, Rat: 100%, Sheep: 100%, Yeast: 93%, Zebrafish: 93%
Characteristics:	This is a rabbit polyclonal antibody against EIF6. It was validated on Western Blot.
Purification:	Affinity Purified

Target Details

Target:	EIF6
Alternative Name:	EIF6 (EIF6 Products)

Target Details

Background:	<p>Hemidesmosomes are structures which link the basal lamina to the intermediate filament cytoskeleton. An important functional component of hemidesmosomes is the integrin beta-4 subunit (ITGB4), a protein containing two fibronectin type III domains. The protein encoded by this gene binds to the fibronectin type III domains of ITGB4 and may help link ITGB4 to the intermediate filament cytoskeleton. The encoded protein, which is insoluble and found both in the nucleus and in the cytoplasm, can function as a translation initiation factor and prevent the association of the 40S and 60S ribosomal subunits.</p> <p>Alias Symbols: 2, CAB, EIF3A, ITGB4BP, b, b(2)gcn, gcn, p27BBP, eIF-6, p27(BBP)</p> <p>Protein Interaction Partner: ZNF622, BCCIP, PPAN, NMD3, GLTSCR2, GTPBP4, POP1, TOP2B, TOP2A, RNF2, CNBP, RARS, PPP5C, PEPD, PAFAH1B2, HSPA9, HSPA1A, HPRT1, EIF4E, DFFA, CFL1, CAPN1, ASNA1, GINS3, BZW2, ABHD14A, TNFAIP8, XRN2, HDAC9, ZBTB26, VCAM1, UBC, ECT2, HNRNPU, FBL, DHX9, APP, R</p> <p>Protein Size: 245</p>
Molecular Weight:	27 kDa
Gene ID:	3692
NCBI Accession:	NM_002212 , NP_002203
UniProt:	P56537
Pathways:	Ribonucleoprotein Complex Subunit Organization , Ribosome Assembly

Application Details

Application Notes:	Optimal working dilutions should be determined experimentally by the investigator.
Comment:	Antigen size: 245 AA
Restrictions:	For Research Use only

Handling

Format:	Liquid
Concentration:	Lot specific
Buffer:	Liquid. Purified antibody supplied in 1x PBS buffer with 0.09 % (w/v) sodium azide and 2 % sucrose.
Preservative:	Sodium azide
Precaution of Use:	This product contains Sodium azide: a POISONOUS AND HAZARDOUS SUBSTANCE which

Handling

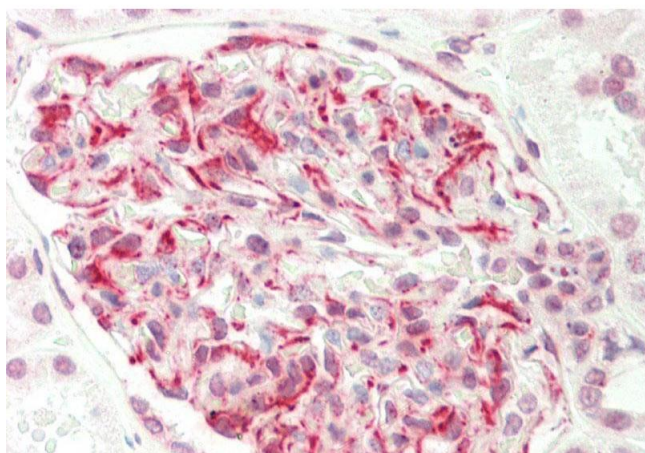
should be handled by trained staff only.

Handling Advice: Avoid repeated freeze-thaw cycles.

Storage: -20 °C

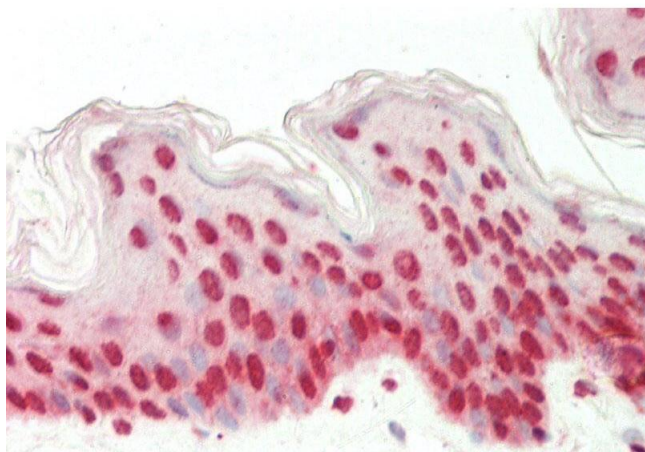
Storage Comment: For short term use, store at 2-8°C up to 1 week. For long term storage, store at -20°C in small aliquots to prevent freeze-thaw cycles.

Images



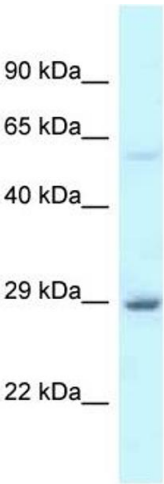
Immunohistochemistry

Image 1. Rabbit Anti-EIF6 antibody Catalog Number: ARP61387 Formalin Fixed Paraffin Embedded Tissue: Human Kidney Primary antibody Concentration: 1:100 Secondary Antibody: Donkey anti-Rabbit-Cy3 Secondary Antibody Concentration: 1:200 Magnification: 20x Exposure Time: 0.5-2.0sec



Immunohistochemistry

Image 2. Rabbit Anti-EIF6 antibody Catalog Number: ARP61387 Formalin Fixed Paraffin Embedded Tissue: Human Skin Primary antibody Concentration: 1:100 Secondary Antibody: Donkey anti-Rabbit-Cy3 Secondary Antibody Concentration: 1:200 Magnification: 20x Exposure Time: 0.5-2.0sec



Western Blotting

Image 3. WB Suggested Anti-EIF6 Antibody Titration: 1.0 ug/ml Positive Control: Fetal Liver