

Datasheet for ABIN2788799
anti-ABI2 antibody (N-Term)



[Go to Product page](#)

1 Image

Overview

Quantity:	100 µL
Target:	ABI2
Binding Specificity:	N-Term
Reactivity:	Human, Mouse, Rat, Guinea Pig, Rabbit, Cow, Dog, Horse, Saccharomyces cerevisiae, Zebrafish (Danio rerio)
Host:	Rabbit
Clonality:	Polyclonal
Conjugate:	This ABI2 antibody is un-conjugated
Application:	Western Blotting (WB)

Product Details

Immunogen:	The immunogen is a synthetic peptide directed towards the N-terminal region of Human ABI2
Sequence:	MLLEEEIPGG RRALFDSYTN LERVADYCEN NYIQSADKQR ALEETKAYTT
Predicted Reactivity:	Cow: 100%, Dog: 100%, Guinea Pig: 100%, Horse: 100%, Human: 100%, Mouse: 93%, Rabbit: 100%, Rat: 100%, Yeast: 83%, Zebrafish: 85%
Characteristics:	This is a rabbit polyclonal antibody against ABI2. It was validated on Western Blot.
Purification:	Affinity Purified

Target Details

Target:	ABI2
---------	------

Target Details

Alternative Name:	ABI2 (ABI2 Products)
Background:	<p>ABI2 may act in regulation of cell growth and transformation by interacting with nonreceptor tyrosine kinases ABL1 and/or ABL2. ABI2 is a part of the WAVE complex that regulates lamellipodia formation. The WAVE complex regulates actin filament reorganization via its interaction with the Arp2/3 complex. It regulates ABL1/c-Abl-mediated phosphorylation of MENA.</p> <p>Alias Symbols: ABI-2, ABI2B, AIP-1, AbIBP3, SSH3BP2, argBPIA, argBPIB</p> <p>Protein Interaction Partner: CCDC36, MRFAP1L1, EGLN3, IFT20, PRAM1, CCDC102B, ARMC7, GCC1, MRPL44, VARS2, KIAA1217, CCHCR1, PRR16, BLOC1S6, TFIP11, NUP62, TRIM32, EFS, STAM2, ABI2, PPIF, ARHGAP32, HOMER3, HGS, EIF3H, NCK2, WIPF1, VASP, TRIP6, SDCBP, PRKAA2, PRKAA1, PIN1, LMO2, KRT33B</p> <p>Protein Size: 475</p>
Molecular Weight:	52 kDa
Gene ID:	10152
NCBI Accession:	NM_005759 , NP_005750
UniProt:	Q9NYB9

Application Details

Application Notes:	Optimal working dilutions should be determined experimentally by the investigator.
Comment:	Antigen size: 475 AA
Restrictions:	For Research Use only

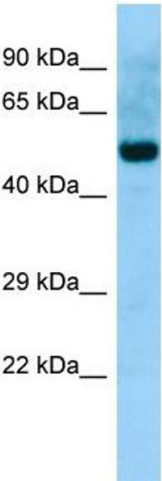
Handling

Format:	Liquid
Concentration:	Lot specific
Buffer:	Liquid. Purified antibody supplied in 1x PBS buffer with 0.09 % (w/v) sodium azide and 2 % sucrose.
Preservative:	Sodium azide
Precaution of Use:	This product contains Sodium azide: a POISONOUS AND HAZARDOUS SUBSTANCE which should be handled by trained staff only.
Handling Advice:	Avoid repeated freeze-thaw cycles.

Handling

Storage:	-20 °C
Storage Comment:	For short term use, store at 2-8°C up to 1 week. For long term storage, store at -20°C in small aliquots to prevent freeze-thaw cycles.

Images



Western Blotting

Image 1. WB Suggested Anti-ABL2 Antibody Titration: 1.0 ug/ml Positive Control: Fetal Stomach