



[Go to Product page](#)

Datasheet for ABIN2788847
anti-RPL26 antibody (C-Term)

2 Images

Overview

Quantity:	100 µL
Target:	RPL26
Binding Specificity:	C-Term
Reactivity:	Human, Mouse, Rat, Cow, Guinea Pig, Horse, Rabbit, Zebrafish (Danio rerio), Dog
Host:	Rabbit
Clonality:	Polyclonal
Conjugate:	This RPL26 antibody is un-conjugated
Application:	Western Blotting (WB)

Product Details

Sequence:	TVHVGIHPSK VVITRLKLDK DRKKILERKA KSRQVGKEKG KYKEETIEKM
Predicted Reactivity:	Cow: 100%, Dog: 100%, Guinea Pig: 100%, Horse: 100%, Human: 100%, Mouse: 100%, Rabbit: 100%, Rat: 100%, Zebrafish: 80%
Characteristics:	This is a rabbit polyclonal antibody against RPL26. It was validated on Western Blot.
Purification:	Affinity Purified

Target Details

Target:	RPL26
Alternative Name:	RPL26 (RPL26 Products)
Background:	Ribosomes, the organelles that catalyze protein synthesis, consist of a small 40S subunit and a

Target Details

large 60S subunit. Together these subunits are composed of 4 RNA species and approximately 80 structurally distinct proteins. This gene encodes a ribosomal protein that is a component of the 60S subunit. The protein belongs to the L24P family of ribosomal proteins. It is located in the cytoplasm. As is typical for genes encoding ribosomal proteins, there are multiple processed pseudogenes of this gene dispersed through the genome.

Alias Symbols: L26

Protein Interaction Partner: UBC, MDM2, TUBG1, TP53, CEP76, TUBGCP3, RNF2, RPL15, RPL36, RPL35, EEF1E1, RPL21, RPL17, RPL13, RPL7A, DARS, TARDBP, ICAM1, IGSF8, PAN2, PELP1, UBL4A, VCAM1, ITGA4, FN1, APLP2, EIF4A3, MAGOH, CBX5, CAND1, CUL4A, CDK2, YWHAZ, SIRT7, ARRB2, SUMO2, EBNA-LP,

Protein Size: 145

Molecular Weight: 16 kDa

Gene ID: 6154

NCBI Accession: [NM_000987](#), [NP_000978](#)

UniProt: [P61254](#)

Application Details

Application Notes: Optimal working dilutions should be determined experimentally by the investigator.

Comment: Antigen size: 145 AA

Restrictions: For Research Use only

Handling

Format: Liquid

Concentration: Lot specific

Buffer: Liquid. Purified antibody supplied in 1x PBS buffer with 0.09 % (w/v) sodium azide and 2 % sucrose.

Preservative: Sodium azide

Precaution of Use: This product contains Sodium azide: a POISONOUS AND HAZARDOUS SUBSTANCE which should be handled by trained staff only.

Handling Advice: Avoid repeated freeze-thaw cycles.

Storage: -20 °C

Handling

Storage Comment: For short term use, store at 2-8°C up to 1 week. For long term storage, store at -20°C in small aliquots to prevent freeze-thaw cycles.

Images

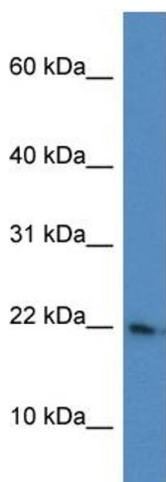


Western Blotting

Image 1. WB Suggested Anti-RPL26 Antibody Titration: 1.0 $\mu\text{g}/\text{mL}$

Positive Control: HeLa Whole Cell

RPL26 is supported by BioGPS gene expression data to be expressed in HeLa



Rabbit Anti-RPL26 Antibody
Catalog Number: ARP61599
Lot Number: QC32241
Lane: HeLa Cell Lysate

Antibody Titration: 1.0 $\mu\text{g}/\text{ml}$
Gel Concentration: 10-20%

Western Blotting

Image 2.