

Datasheet for ABIN2788856
anti-FAF1 antibody (Middle Region)

2 Images

[Go to Product page](#)

Overview

Quantity:	100 µL
Target:	FAF1
Binding Specificity:	Middle Region
Reactivity:	Human, Mouse, Rat, Cow, Guinea Pig, Horse, Dog
Host:	Rabbit
Clonality:	Polyclonal
Conjugate:	This FAF1 antibody is un-conjugated
Application:	Western Blotting (WB)

Product Details

Sequence:	GLSYPCRHLT VGRSSPAQT REQSEEQITD VHMVSDSDGD DFEDATEFGV
Predicted Reactivity:	Cow: 100%, Dog: 93%, Guinea Pig: 86%, Horse: 100%, Human: 100%, Mouse: 86%, Rat: 100%
Characteristics:	This is a rabbit polyclonal antibody against FAF1. It was validated on Western Blot.
Purification:	Affinity Purified

Target Details

Target:	FAF1
Alternative Name:	FAF1 (FAF1 Products)
Background:	Interaction of Fas ligand (TNFSF6) with the FAS antigen (TNFRSF6) mediates programmed cell death, also called apoptosis, in a number of organ systems. The protein encoded by this gene

Target Details

binds to FAS antigen and can initiate apoptosis or enhance apoptosis initiated through FAS antigen. Initiation of apoptosis by the protein encoded by this gene requires a ubiquitin-like domain but not the FAS-binding domain.

Alias Symbols: CGI-03, FLJ37524, HFAF1s, UBXD12, UBXN3A, hFAF1

Protein Interaction Partner: ASNA1, DDOST, GET4, FAF1, VAPA, VAPB, UBL4A, BAG6, VCP, UBC, RPN2, FAM114A1, SAMHD1, SWAP70, XP07, PUF60, HSPH1, CARM1, SEC23A, PRMT3, FARSB, RANBP3, HIRIP3, HIST1H4A, SF1, UGP2, TLN1, TROVE2, SET, RPL24, PPP2R5C, PPM1G, PLOD2, ILK, HSPA4, GART, CARS, SKI

Protein Size: 650

Molecular Weight: 72 kDa

Gene ID: 11124

NCBI Accession: [NM_007051](#), [NP_008982](#)

UniProt: [Q9UNN5](#)

Pathways: [Maintenance of Protein Location](#)

Application Details

Application Notes: Optimal working dilutions should be determined experimentally by the investigator.

Comment: Antigen size: 650 AA

Restrictions: For Research Use only

Handling

Format: Liquid

Concentration: Lot specific

Buffer: Liquid. Purified antibody supplied in 1x PBS buffer with 0.09 % (w/v) sodium azide and 2 % sucrose.

Preservative: Sodium azide

Precaution of Use: This product contains Sodium azide: a POISONOUS AND HAZARDOUS SUBSTANCE which should be handled by trained staff only.

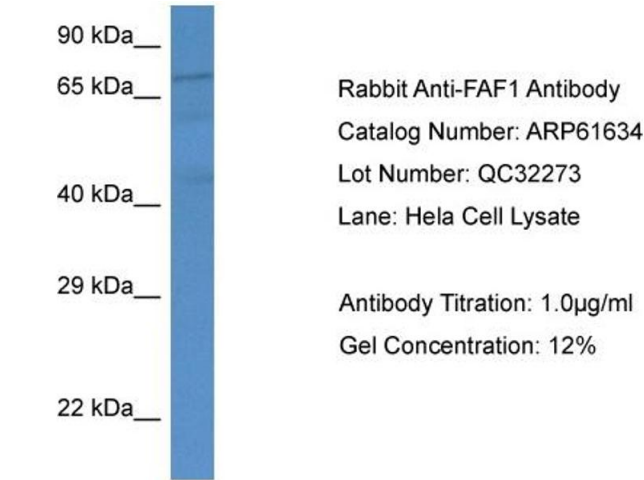
Handling Advice: Avoid repeated freeze-thaw cycles.

Storage: -20 °C

Handling

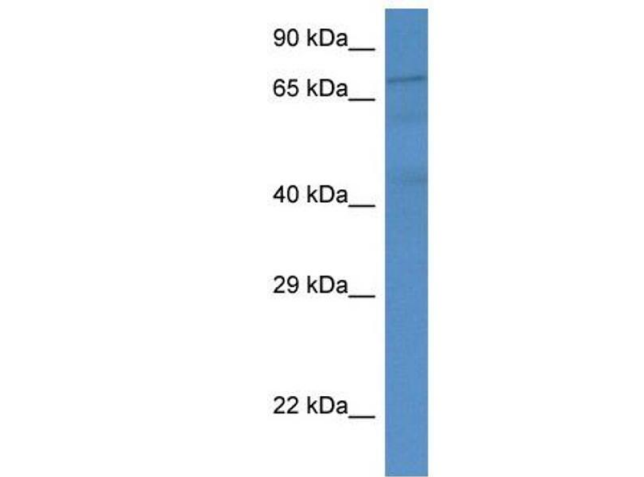
Storage Comment: For short term use, store at 2-8°C up to 1 week. For long term storage, store at -20°C in small aliquots to prevent freeze-thaw cycles.

Images



Western Blotting

Image 1.



Western Blotting

Image 2. WB Suggested Anti-FAF1 Antibody Titration: 1.0 µg/mL

Positive Control: HeLa Whole Cell

FAF1 is supported by BioGPS gene expression data to be expressed in HeLa