

Datasheet for ABIN2788857
anti-FAF1 antibody (C-Term)[Go to Product page](#)

2 Images

Overview

Quantity:	100 µL
Target:	FAF1
Binding Specificity:	C-Term
Reactivity:	Human, Mouse, Rat, Cow, Zebrafish (Danio rerio), Guinea Pig, Horse, Dog
Host:	Rabbit
Clonality:	Polyclonal
Conjugate:	This FAF1 antibody is un-conjugated
Application:	Western Blotting (WB)

Product Details

Sequence:	IFTAQQQEDI KDEDEREARE NVKREQDEAY RLSLEADRAK REAHEREMAE
Predicted Reactivity:	Cow: 100%, Dog: 100%, Guinea Pig: 100%, Horse: 100%, Human: 100%, Mouse: 100%, Rat: 100%, Zebrafish: 93%
Characteristics:	This is a rabbit polyclonal antibody against FAF1. It was validated on Western Blot.
Purification:	Affinity Purified

Target Details

Target:	FAF1
Alternative Name:	FAF1 (FAF1 Products)
Background:	Interaction of Fas ligand (TNFSF6) with the FAS antigen (TNFRSF6) mediates programmed cell

Target Details

death, also called apoptosis, in a number of organ systems. The protein encoded by this gene binds to FAS antigen and can initiate apoptosis or enhance apoptosis initiated through FAS antigen. Initiation of apoptosis by the protein encoded by this gene requires a ubiquitin-like domain but not the FAS-binding domain.

Alias Symbols: CGI-03, FLJ37524, HFAF1s, UBXD12, UBXN3A, hFAF1

Protein Interaction Partner: ASNA1, DDOST, GET4, FAF1, VAPA, VAPB, UBL4A, BAG6, VCP, UBC, RPN2, FAM114A1, SAMHD1, SWAP70, XPO7, PUF60, HSPH1, CARM1, SEC23A, PRMT3, FARSB, RANBP3, HIRIP3, HIST1H4A, SF1, UGP2, TLN1, TROVE2, SET, RPL24, PPP2R5C, PPM1G, PLOD2, ILK, HSPA4, GART, CARS, SKI

Protein Size: 650

Molecular Weight: 72 kDa

Gene ID: 11124

NCBI Accession: [NM_007051](#), [NP_008982](#)

UniProt: [Q9UNN5](#)

Pathways: [Maintenance of Protein Location](#)

Application Details

Application Notes: Optimal working dilutions should be determined experimentally by the investigator.

Comment: Antigen size: 650 AA

Restrictions: For Research Use only

Handling

Format: Liquid

Concentration: Lot specific

Buffer: Liquid. Purified antibody supplied in 1x PBS buffer with 0.09 % (w/v) sodium azide and 2 % sucrose.

Preservative: Sodium azide

Precaution of Use: This product contains Sodium azide: a POISONOUS AND HAZARDOUS SUBSTANCE which should be handled by trained staff only.

Handling Advice: Avoid repeated freeze-thaw cycles.

Handling

Storage:	-20 °C
Storage Comment:	For short term use, store at 2-8°C up to 1 week. For long term storage, store at -20°C in small aliquots to prevent freeze-thaw cycles.

Images

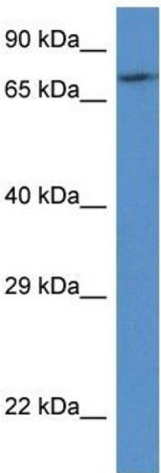


Rabbit Anti-FAF1 Antibody
Catalog Number: ARP61635
Lot Number: QC32274
Lane: HeLa Cell Lysate

Antibody Titration: 1.0µg/ml
Gel Concentration: 12%

Western Blotting

Image 1.



Western Blotting

Image 2. WB Suggested Anti-FAF1 AntibodyTitration: 1.0 µg/mL

Positive Control: HeLa Whole Cell

FAF1 is supported by BioGPS gene expression data to be expressed in HeLa