

Datasheet for ABIN2788864  
**anti-EPH Receptor A4 antibody (C-Term)**[Go to Product page](#)

## 3 Images

## Overview

Quantity:	100 µL
Target:	EPH Receptor A4 (EPHA4)
Binding Specificity:	C-Term
Reactivity:	Human, Mouse, Rat, Cow, Dog, Horse, Rabbit, Guinea Pig, Zebrafish (Danio rerio)
Host:	Rabbit
Clonality:	Polyclonal
Conjugate:	This EPH Receptor A4 antibody is un-conjugated
Application:	Western Blotting (WB), Immunohistochemistry (IHC)

## Product Details

Sequence:	VISRRRSKYS KAKQEADEEK HLNQGVRTYV DPFTYEDPNQ AVREFAKEID
Predicted Reactivity:	Cow: 100%, Dog: 100%, Guinea Pig: 100%, Horse: 100%, Human: 100%, Mouse: 100%, Rabbit: 100%, Rat: 100%, Zebrafish: 83%
Characteristics:	This is a rabbit polyclonal antibody against Epha4. It was validated on Western Blot.
Purification:	Affinity Purified

## Target Details

Target:	EPH Receptor A4 (EPHA4)
Alternative Name:	Epha4 ( <a href="#">EPHA4 Products</a> )
Background:	Epha4 is a receptor tyrosine kinase which binds membrane-bound ephrin family ligands

## Target Details

residing on adjacent cells, leading to contact-dependent bidirectional signaling into neighboring cells.

Alias Symbols: 2900005C20Rik, AI385584, Cek8, Hek8, Sek, Sek1, Tyro1, rb

Protein Interaction Partner: Efnb2, VAPB, Vav2, Ngef, EphA4,

Protein Size: 986

Molecular Weight: 110 kDa

Gene ID: 13838

NCBI Accession: [NM\\_007936](#), [NP\\_031962](#)

UniProt: [Q03137](#)

Pathways: [RTK Signaling](#)

## Application Details

Application Notes: Optimal working dilutions should be determined experimentally by the investigator.

Comment: Antigen size: 986 AA

Restrictions: For Research Use only

## Handling

Format: Liquid

Concentration: Lot specific

Buffer: Liquid. Purified antibody supplied in 1x PBS buffer with 0.09 % (w/v) sodium azide and 2 % sucrose.

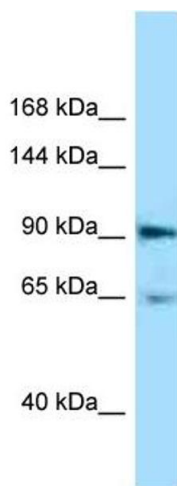
Preservative: Sodium azide

Precaution of Use: This product contains Sodium azide: a POISONOUS AND HAZARDOUS SUBSTANCE which should be handled by trained staff only.

Handling Advice: Avoid repeated freeze-thaw cycles.

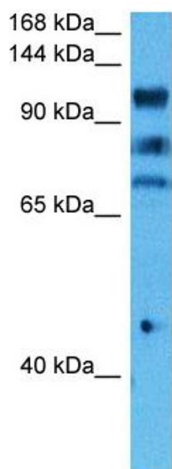
Storage: -20 °C

Storage Comment: For short term use, store at 2-8°C up to 1 week. For long term storage, store at -20°C in small aliquots to prevent freeze-thaw cycles.



#### Western Blotting

**Image 1.** WB Suggested Anti-Epha4 Antibody Titration: 1.0 ug/ml Positive Control: Mouse Pancreas

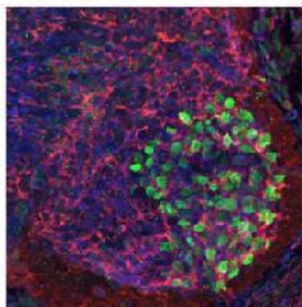


Host: Rabbit  
Target Name: Epha4  
Sample Type: Mouse Brain Lysate  
Antibody Dilution: 1.0µg/ml

#### Western Blotting

**Image 2.** Host: Mouse Target Name: EPHA4 Sample Tissue: Mouse Brain Antibody Dilution: 1ug/ml

#### Epha4



Red: Epha4  
Cyan: Nissl(Neurons)  
Green: FoxP1 (lateral motor neurons)

See IHC 1 Data and Customer Feedback for more Information

#### Immunohistochemistry

**Image 3.** Sample Type : Embryonic mouse spinal cord  
Primary Antibody Dilution : 1:1000 Secondary Antibody : Anti-rabbit-Cy3 Secondary Antibody Dilution : 1:1000  
Color/Signal Descriptions : Red: Epha4 Cyan: Nissl(Neurons) Green: FoxP1 (lateral motor neurons) Gene Name : Epha4  
Submitted by : Joshua R. Sanes, Molecular and Cellular Biology, Harvard University, 52 Oxford Street, Room 335, Cambridge MA 02138, Phone: 617-496-8683, FAX: 617-495-0524, email: sanesj@mcb.harvard.edu