



[Go to Product page](#)

Datasheet for ABIN2788872  
**anti-EIF3A antibody (C-Term)**

2 Images

Overview

Quantity:	100 µL
Target:	EIF3A
Binding Specificity:	C-Term
Reactivity:	Human, Mouse, Rat, Rabbit, Cow, Dog, Horse, Zebrafish (Danio rerio), Pig
Host:	Rabbit
Clonality:	Polyclonal
Conjugate:	This EIF3A antibody is un-conjugated
Application:	Western Blotting (WB)

Product Details

Sequence:	PPALSRDRER DRDREREKGEK EKASWRAEKD RESLRRTKNE TDEDGWTTVR
Predicted Reactivity:	Cow: 100%, Dog: 100%, Horse: 100%, Human: 100%, Mouse: 100%, Pig: 100%, Rabbit: 100%, Rat: 100%, Zebrafish: 79%
Characteristics:	This is a rabbit polyclonal antibody against EIF3A. It was validated on Western Blot.
Purification:	Affinity Purified

Target Details

Target:	EIF3A
Alternative Name:	EIF3A ( <a href="#">EIF3A Products</a> )
Background:	EIF3A is a component of the eukaryotic translation initiation factor 3 (eIF-3) complex, which is

## Target Details

---

required for several steps in the initiation of protein synthesis. The eIF-3 complex associates with the 40S ribosome and facilitates the recruitment of eIF-1, eIF-1A, eIF-2:GTP:methionyl-tRNA<sup>i</sup> and eIF-5 to form the 43S preinitiation complex (43S PIC). The eIF-3 complex stimulates mRNA recruitment to the 43S PIC and scanning of the mRNA for AUG recognition. The eIF-3 complex is also required for disassembly and recycling of posttermination ribosomal complexes and subsequently prevents premature joining of the 40S and 60S ribosomal subunits prior to initiation.

Alias Symbols: EIF3, EIF3S10, KIAA0139, P167, TIF32, eIF3-p170, eIF3-theta, p180, p185  
Protein Interaction Partner: UBC, REL, TFIP11, WWP2, SUMO2, STAU1, LGR4, WWOX, EED, SHFM1, RNF2, EIF3CL, YTHDF2, LARP1, NUDT21, EIF3C, DYNC112, RPS26, RPS25, RPS23, RPS20, RPS18, RPS12, RPS10, RPS9, RPS3A, RPS3, FBXO6, TARDBP, EIF3D, UBD, ICAM1, CD81, RIOK2, IGSF8, BBS4, BBS1, gag-po

Protein Size: 1382

---

Molecular Weight: 152 kDa

---

Gene ID: 8661

---

NCBI Accession: [NM\\_003750](#), [NP\\_003741](#)

---

UniProt: [Q14152](#)

---

Pathways: [Ribonucleoprotein Complex Subunit Organization](#)

## Application Details

---

Application Notes: Optimal working dilutions should be determined experimentally by the investigator.

---

Comment: Antigen size: 1382 AA

---

Restrictions: For Research Use only

## Handling

---

Format: Liquid

---

Concentration: Lot specific

---

Buffer: Liquid. Purified antibody supplied in 1x PBS buffer with 0.09 % (w/v) sodium azide and 2 % sucrose.

---

Preservative: Sodium azide

---

Precaution of Use: This product contains Sodium azide: a POISONOUS AND HAZARDOUS SUBSTANCE which

---

## Handling

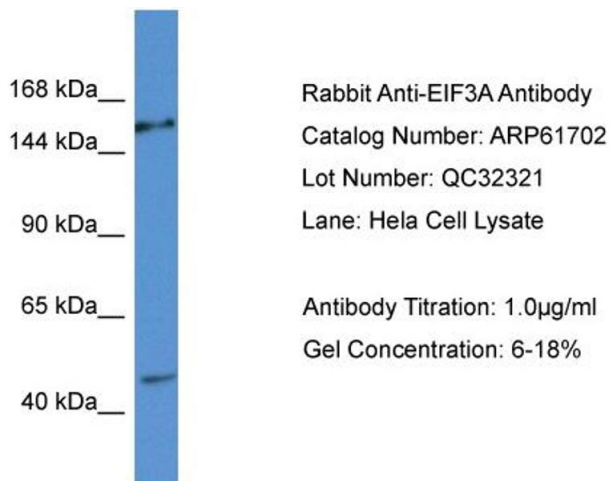
should be handled by trained staff only.

Handling Advice: Avoid repeated freeze-thaw cycles.

Storage: -20 °C

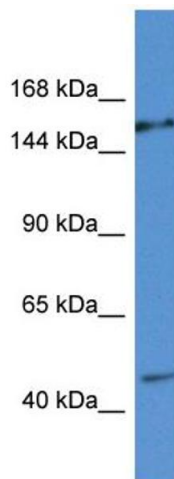
Storage Comment: For short term use, store at 2-8°C up to 1 week. For long term storage, store at -20°C in small aliquots to prevent freeze-thaw cycles.

## Images



### Western Blotting

#### Image 1.



### Western Blotting

**Image 2.** WB Suggested Anti-EIF3A Antibody Titration: 1.0 µg/mL

Positive Control: HeLa Whole Cell

There is BioGPS gene expression data showing that EIF3A is expressed in HeLa