

Datasheet for ABIN2788875
anti-LIPH antibody (C-Term)[Go to Product page](#)

1 Image

Overview

Quantity:	100 µL
Target:	LIPH
Binding Specificity:	C-Term
Reactivity:	Human, Mouse, Rat, Cow, Horse, Rabbit, Dog, Guinea Pig
Host:	Rabbit
Clonality:	Polyclonal
Conjugate:	This LIPH antibody is un-conjugated
Application:	Western Blotting (WB)

Product Details

Sequence:	LRESCITAY PCDSYQDYRN GKCVSCGTSQ KESCPLLGY ADNWKDHLRG
Predicted Reactivity:	Cow: 100%, Dog: 93%, Guinea Pig: 93%, Horse: 86%, Human: 100%, Mouse: 93%, Rabbit: 93%, Rat: 93%
Characteristics:	This is a rabbit polyclonal antibody against LIPH. It was validated on Western Blot.
Purification:	Affinity Purified

Target Details

Target:	LIPH
Alternative Name:	LIPH (LIPH Products)
Background:	This gene encodes a membrane-bound member of the mammalian triglyceride lipase family. It

Target Details

catalyzes the production of 2-acyl lysophosphatidic acid (LPA), which is a lipid mediator with diverse biological properties that include platelet aggregation, smooth muscle contraction, and stimulation of cell proliferation and motility.

Alias Symbols: AH, LPDLR, PLA1B, mPA-PLA1, LAH2, ARWH2

Protein Interaction Partner: UBC,

Protein Size: 451

Molecular Weight: 50 kDa

Gene ID: 200879

NCBI Accession: [NM_139248](#), [NP_640341](#)

UniProt: [Q8WWY8](#)

Application Details

Application Notes: Optimal working dilutions should be determined experimentally by the investigator.

Comment: Antigen size: 451 AA

Restrictions: For Research Use only

Handling

Format: Liquid

Concentration: Lot specific

Buffer: Liquid. Purified antibody supplied in 1x PBS buffer with 0.09 % (w/v) sodium azide and 2 % sucrose.

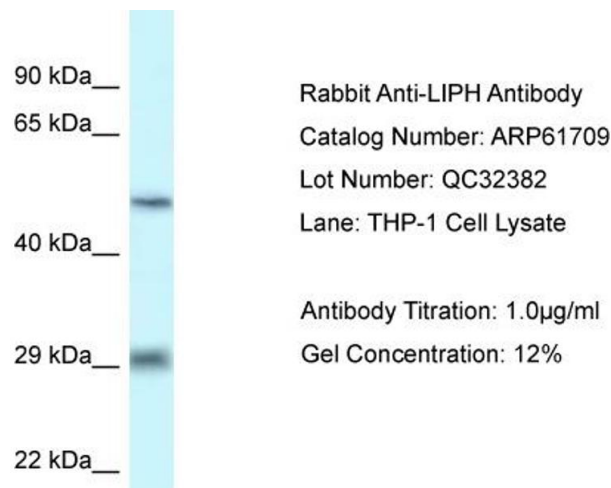
Preservative: Sodium azide

Precaution of Use: This product contains Sodium azide: a POISONOUS AND HAZARDOUS SUBSTANCE which should be handled by trained staff only.

Handling Advice: Avoid repeated freeze-thaw cycles.

Storage: -20 °C

Storage Comment: For short term use, store at 2-8°C up to 1 week. For long term storage, store at -20°C in small aliquots to prevent freeze-thaw cycles.



Western Blotting

Image 1.