

Datasheet for ABIN2788876
anti-HLA-DOB antibody (N-Term)



[Go to Product page](#)

1 Image

Overview

Quantity:	100 µL
Target:	HLA-DOB
Binding Specificity:	N-Term
Reactivity:	Human, Cow, Dog, Horse, Pig, Rabbit, Sheep
Host:	Rabbit
Clonality:	Polyclonal
Conjugate:	This HLA-DOB antibody is un-conjugated
Application:	Western Blotting (WB)

Product Details

Immunogen:	The immunogen is a synthetic peptide directed towards the N-terminal region of Human HLA-DOB
Sequence:	LTRLDSSMTQ GTDSPEDFVI QAKADCYFTN GTEKVQFVVR FIFNLEEYVR
Predicted Reactivity:	Cow: 79%, Dog: 93%, Horse: 93%, Human: 100%, Pig: 93%, Rabbit: 86%, Sheep: 86%
Characteristics:	This is a rabbit polyclonal antibody against HLA-DOB. It was validated on Western Blot.
Purification:	Affinity Purified

Target Details

Target:	HLA-DOB
Alternative Name:	HLA-DOB (HLA-DOB Products)

Target Details

Background: HLA-DOB belongs to the HLA class II beta chain paralogues. This class II molecule is a heterodimer consisting of an alpha (DOA) and a beta chain (DOB), both anchored in the membrane. It is located in intracellular vesicles. DO suppresses peptide loading of MHC class II molecules by inhibiting HLA-DM. Class II molecules are expressed in antigen presenting cells (APC: B lymphocytes, dendritic cells, macrophages). The beta chain is approximately 26-28 kDa and its gene contains 6 exons. Exon one encodes the leader peptide, exons 2 and 3 encode the two extracellular domains, exon 4 encodes the transmembrane domain and exon 5 encodes the cytoplasmic tail.

Alias Symbols: DOB

Protein Interaction Partner: HLA-DMB, CD82, CD63,

Protein Size: 273

Molecular Weight: 30 kDa

Gene ID: 3112

NCBI Accession: [NM_002120, NP_002111](#)

UniProt: [Q5QNS2](#)

Pathways: [Cancer Immune Checkpoints, Human Leukocyte Antigen \(HLA\) in Adaptive Immune Response](#)

Application Details

Restrictions: For Research Use only

Handling

Format: Liquid

Concentration: 1 mg/mL

Buffer: Liquid. Purified antibody supplied in 1x PBS buffer with 0.09 % (w/v) sodium azide and 2 % sucrose.

Preservative: Sodium azide

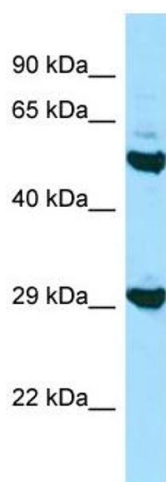
Precaution of Use: This product contains Sodium azide: a POISONOUS AND HAZARDOUS SUBSTANCE which should be handled by trained staff only.

Handling Advice: Avoid repeat freeze-thaw cycles.

Storage: -20 °C

Storage Comment: For short term use, store at 2-8°C up to 1 week. For long term storage, store at -20°C in small

aliquots to prevent freeze-thaw cycles.



Western Blotting

Image 1.