

Datasheet for ABIN2788889
anti-RRS1 antibody (C-Term)

2 Images

[Go to Product page](#)

Overview

Quantity:	100 µL
Target:	RRS1
Binding Specificity:	C-Term
Reactivity:	Human, Rat, Dog, Pig, Cow
Host:	Rabbit
Clonality:	Polyclonal
Conjugate:	This RRS1 antibody is un-conjugated
Application:	Western Blotting (WB)

Product Details

Sequence:	RQGPGGKRKG GPPSQGGKRK GGLGGKMNSG PPGLGGKRKG GQRPGGKRRK
Predicted Reactivity:	Cow: 86%, Dog: 86%, Human: 100%, Pig: 86%, Rat: 79%
Characteristics:	This is a rabbit polyclonal antibody against RRS1. It was validated on Western Blot.
Purification:	Affinity Purified

Target Details

Target:	RRS1
Alternative Name:	RRS1 (RRS1 Products)
Background:	The function of this protein remains unknown. Alias Symbols: KIAA0112

Target Details

Protein Interaction Partner: APPBP2, UBC, ADARB1, LIN28A, NOLC1, DDX21, U2AF1, TPR, RPS7, RPS6, RPS4X, RPL19, RPL18A, RPL11, RPL7, RPL6, RPL5, RANBP2, NOP2, NHP2L1, NFIA, FTSJ3, NIFK, PRPF40A, NOP58, GNL3, RSL1D1, ADNP, NCSTN, ACIN1, U2AF2, PSIP1, DIDO1, EBNA1BP2, NOP56, MYBBP1A, RBM

Protein Size: 365

Molecular Weight: 40 kDa

Gene ID: 23212

NCBI Accession: [NM_015169](#), [NP_055984](#)

UniProt: [Q15050](#)

Application Details

Application Notes: Optimal working dilutions should be determined experimentally by the investigator.

Comment: Antigen size: 365 AA

Restrictions: For Research Use only

Handling

Format: Liquid

Concentration: Lot specific

Buffer: Liquid. Purified antibody supplied in 1x PBS buffer with 0.09 % (w/v) sodium azide and 2 % sucrose.

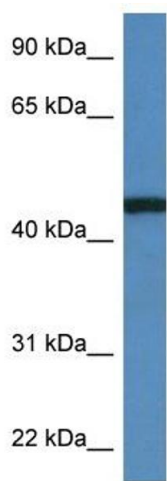
Preservative: Sodium azide

Precaution of Use: This product contains Sodium azide: a POISONOUS AND HAZARDOUS SUBSTANCE which should be handled by trained staff only.

Handling Advice: Avoid repeated freeze-thaw cycles.

Storage: -20 °C

Storage Comment: For short term use, store at 2-8°C up to 1 week. For long term storage, store at -20°C in small aliquots to prevent freeze-thaw cycles.



Western Blotting

Image 1. WB Suggested Anti-RRS1 Antibody Titration: 1.0 µg/mL

Positive Control: MCF7 Whole Cell

RRS1 is supported by BioGPS gene expression data to be expressed in MCF7



Rabbit Anti-RRS1 Antibody
Catalog Number: ARP61751
Lot Number: QC32417
Lane: MCF7 Cell Lysate

Antibody Titration: 1.0 µg/ml
Gel Concentration: 12%

Western Blotting

Image 2.