



[Go to Product page](#)

Datasheet for ABIN2788905  
**anti-STOML2 antibody (C-Term)**

2 Images

Overview

Quantity:	100 µL
Target:	STOML2
Binding Specificity:	C-Term
Reactivity:	Human, Cow, Dog, Pig, Guinea Pig, Horse, Rabbit
Host:	Rabbit
Clonality:	Polyclonal
Conjugate:	This STOML2 antibody is un-conjugated
Application:	Western Blotting (WB)

Product Details

Sequence:	VTSMVAQAMG VYGALTKAPV PGTPDSLSSG SSRDVQGTDA SLDEELDRVK
Predicted Reactivity:	Cow: 86%, Dog: 100%, Guinea Pig: 79%, Horse: 93%, Human: 100%, Pig: 100%, Rabbit: 92%
Characteristics:	This is a rabbit polyclonal antibody against STOML2. It was validated on Western Blot.
Purification:	Affinity Purified

Target Details

Target:	STOML2
Alternative Name:	STOML2 ( <a href="#">STOML2 Products</a> )
Background:	The function of this protein remains unknown. Alias Symbols: HSPC108, SLP-2

## Target Details

---

Protein Interaction Partner: HAUS2, UBC, MDM2, SUZ12, PARK2, FBXO6, GLP1R, env, YWHAE, ECT2, PAXIP1, HSP90AB1, HSPA5, HSPA1L, HSPA1A, ATP5A1, APP, SF3B3, SYNCRIP, ATP5H, MATR3, DAP3, SIRT7, ELAVL1, SUMO4, ICT1,  
Protein Size: 356

Molecular Weight: 39 kDa

Gene ID: 30968

NCBI Accession: [NM\\_013442](#), [NP\\_038470](#)

UniProt: [Q9UJZ1](#)

Pathways: [SARS-CoV-2 Protein Interactome](#), [The Global Phosphorylation Landscape of SARS-CoV-2 Infection](#)

## Application Details

---

Application Notes: Optimal working dilutions should be determined experimentally by the investigator.

Comment: Antigen size: 356 AA

Restrictions: For Research Use only

## Handling

---

Format: Liquid

Concentration: Lot specific

Buffer: Liquid. Purified antibody supplied in 1x PBS buffer with 0.09 % (w/v) sodium azide and 2 % sucrose.

Preservative: Sodium azide

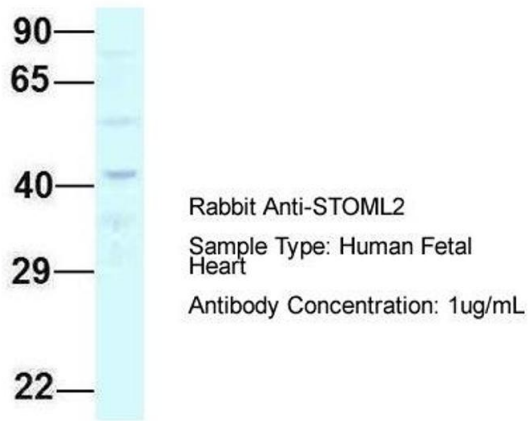
Precaution of Use: This product contains Sodium azide: a POISONOUS AND HAZARDOUS SUBSTANCE which should be handled by trained staff only.

Handling Advice: Avoid repeated freeze-thaw cycles.

Storage: -20 °C

Storage Comment: For short term use, store at 2-8°C up to 1 week. For long term storage, store at -20°C in small aliquots to prevent freeze-thaw cycles.

# STOML2



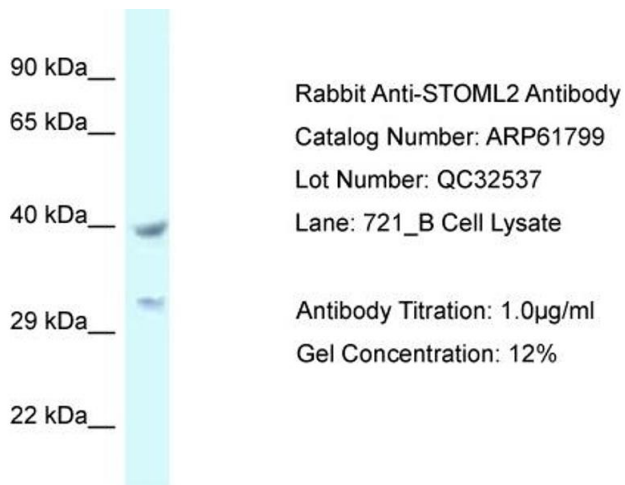
## Western Blotting

**Image 1.** Host: Rabbit

Target Name: STOML2

Sample Tissue: Human Fetal Heart

Antibody Dilution: 1.0 µg/mL



## Western Blotting

**Image 2.**