



[Go to Product page](#)

Datasheet for ABIN2788908
anti-RBMX antibody (C-Term)

1 Image

Overview

Quantity:	100 µL
Target:	RBMX
Binding Specificity:	C-Term
Reactivity:	Human, Rat, Mouse, Cow, Guinea Pig, Horse, Rabbit, Zebrafish (Danio rerio), Dog
Host:	Rabbit
Clonality:	Polyclonal
Conjugate:	This RBMX antibody is un-conjugated
Application:	Western Blotting (WB)

Product Details

Immunogen:	The immunogen is a synthetic peptide directed towards the C-terminal region of Human RBMX
Sequence:	RDDGYSTKDS YSSRDYPSSR DTRDYAPPPR DYTIRDYGHS SSRDDYPSRG
Predicted Reactivity:	Cow: 100%, Dog: 100%, Guinea Pig: 100%, Horse: 100%, Human: 100%, Mouse: 100%, Rabbit: 100%, Rat: 100%, Zebrafish: 83%
Characteristics:	This is a rabbit polyclonal antibody against RBMX. It was validated on Western Blot.
Purification:	Affinity Purified

Target Details

Target:	RBMX
Alternative Name:	RBMX (RBMX Products)

Target Details

Background: This gene belongs to the RBMY gene family which includes candidate Y chromosome spermatogenesis genes. This gene, an active X chromosome homolog of the Y chromosome RBMY gene, is widely expressed whereas the RBMY gene evolved a male-specific function in spermatogenesis. Pseudogenes of this gene, found on chromosomes 1, 4, 9, 11, and 6, were likely derived by retrotransposition from the original gene. Alternatively spliced transcript variants encoding different isoforms have been identified. A snoRNA gene (SNORD61) is found in one of its introns.

Alias Symbols: HNRPG, RBMXP1, RBMXRT, RNMX, hnRNP-G

Protein Interaction Partner: PRR3, NABP1, ROBO3, MAGOHB, APOBEC3C, RBMX, HNRNPK, CLK3, CIRBP, UBC, SNRPA, RBMY1A1, RBM3, KHDRBS2, RBMY1F, SUMO2, SUMO3, PPP2R1A, STAU1, IVNS1ABP, WWOX, EED, RNF2, XRN1, SRPK3, FBXO6, TARDBP, PAN2, CTNNB1, NFE2L2, JAK2, ITGA4, IL7R, IFIT3, FUS, FN1, CSN

Protein Size: 391

Molecular Weight: 42 kDa

Gene ID: 27316

NCBI Accession: [NM_002139](#), [NP_002130](#)

UniProt: [P38159](#)

Pathways: [Chromatin Binding](#), [Ribonucleoprotein Complex Subunit Organization](#)

Application Details

Application Notes: Optimal working dilution should be determined by the investigator.

Restrictions: For Research Use only

Handling

Format: Liquid

Concentration: 1 mg/mL

Buffer: Liquid. Purified antibody supplied in 1x PBS buffer with 0.09 % (w/v) sodium azide and 2 % sucrose.

Preservative: Sodium azide

Precaution of Use: This product contains Sodium azide: a POISONOUS AND HAZARDOUS SUBSTANCE which should be handled by trained staff only.

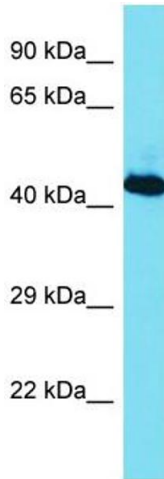
Handling

Handling Advice: Avoid repeat freeze-thaw cycles.

Storage: -20 °C

Storage Comment: For short term use, store at 2-8°C up to 1 week. For long term storage, store at -20°C in small aliquots to prevent freeze-thaw cycles.

Images



Western Blotting

Image 1. Host: Rabbit Target Name: RBMX Sample Type: Jurkat Whole Cell lysates Antibody Dilution: 1.0ug/ml RBMX is supported by BioGPS gene expression data to be expressed in Jurkat